



# New Prince Shri Bhavani

## College of Engineering and Technology



Tambaram-Velachery Main Road, Santhosapuram, Chennai-600 073

www.facebook.com/npsboetofficial | twitter.com/newprinceengg | www.instagram.com/newprinceengg\_official

### Department of Computer Science and Engineering

### Alumni Feedback on Syllabus

Batch:2023 -2024

### Analysis Report

S.No	Statements	Percentage of Response			
		Excellent	Very good	Good	Poor
1.	Help of graduation to work in teams.	42	21	25	13
2.	How do you rate the learning experience in terms of their relevance to the real life applications	50	17	17	17
3.	Compatibility of syllabus with industry standards.	21	17	29	33
4.	How do you rate the curriculum/ courses content that you have learnt in relation to your current job.	13	38	29	21
5.	Learning values(in terms of skills, concepts, knowledge, analytical ability) in syllabus.	17	25	21	38
6.	Curriculum is sufficient to make you analyze the engineering problems and it's suitable solutions.	33	13	25	29
7.	Whether the engineering program facilitates employability.	42	17	21	21
8.	Whether the practical components under the program is covered sufficiently?	17	21	42	21
9.	Whether the program covers all the courses required for the higher studies and abroad studies?	29	21	25	25
10.	Whether the infrastructure for the program is adequate?	25	25	17	33
11.	Elective courses offered is useful in job.	46	17	25	13
12.	Extra/co-curricular activities through club activities or program you have participated as students were they helpful in overall careers.	17	21	25	38
13.	Research and development opportunities as a UG/PG students.	25	13	42	21
14.	Knowledge gained in practical classes in laboratories	38	25	17	21
15.	Continuously soft skills training for placements.	29	4	38	29



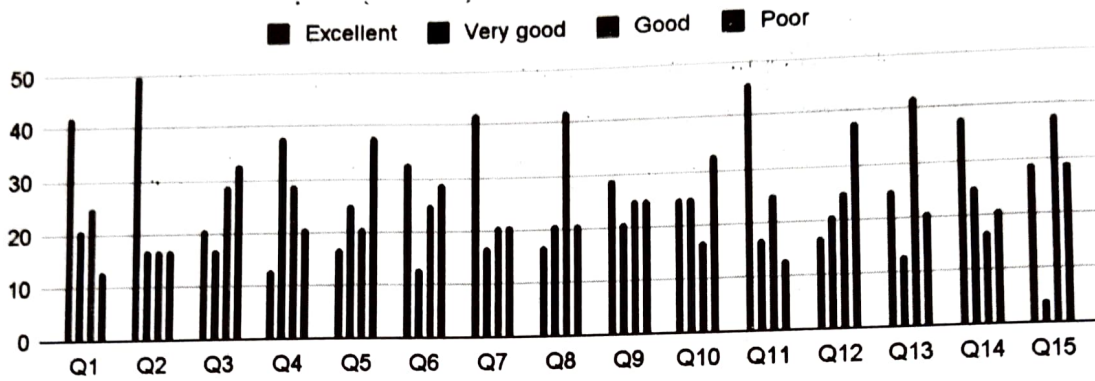
# New Prince Shri Bhavani

## College of Engineering and Technology

ARIIA | NATIONAL GOALS | NAAC | nirf | ISO 9001 CERTIFIED

Tambaram-Velachery Main Road, Santhosapuram, Chennai-600 073  
[www.facebook.com/npsbceofficial](https://www.facebook.com/npsbceofficial) | [twitter.com/newprinceengg](https://twitter.com/newprinceengg) | [www.instagram.com/newprinceengg\\_official](https://www.instagram.com/newprinceengg_official)

### Department of Computer Science and Engineering



ALUMNI FEEDBACK ANALYSIS 2023-2024

**Inference:** Need for more extra-curricular activities and Industrial visit.

**Action Suggested:**

- More co-curricular activities should be done in a more effective way.
- Industrial visit to be arranged.

*[Signature]*  
HOD  
28/12/23

Head of the Department,  
 Dept. of Computer Science & Engg.,  
 New Prince Shri Bhavani College of Engg. & Tech.,  
 Vengalwasi Main Road, Santhosapuram, Chennai-73.

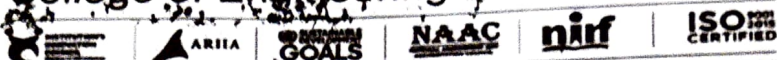
*[Signature]*  
PRINCIPAL

PRINCIPAL  
 NEW PRINCE SHRI BHAVANI COLLEGE OF  
 ENGINEERING & TECHNOLOGY  
 GOWRIVAKKAM, CHENNAI, 600 073



# New Prince Shri Bhavani

## College of Engineering and Technology



Tambaram-Velachery Main Road, Santhosapuram, Chennai-600 073

www.facebook.com/npsbceofficial | twitter.com/newprinceengg | www.instagram.com/newprinceengg\_official

### Department of Computer Science and Engineering

#### Teacher Feedback on Syllabus

Academic year: 2023-2024

#### Analysis Report

S.No	Statements	Percentage of Response			
		Excellent	Very good	Good	Poor
1.	Syllabus is needed based	19	05	38	38
2.	Course objectives are clear and appropriate to the program.	24	29	29	14
3.	The text books/reference books are well suited to the courses.	24	19	38	14
4.	Provision to update curriculum time to time	24	33	24	14
5.	The curriculum and syllabus are well organized and suitable to the program	14	33	19	29
6.	The system followed by the university for the design and development of curriculum is effective.	14	24	24	33
7.	How do you rate the distribution contact hours among the course components?	5	33	33	24
8.	The curriculum has a good balance between theory and practical.	19	38	29	10
9.	How do you rate the effectiveness offered in your program for technological advancements?	24	10	33	29
10.	Importance and relevance of the course for the industrial needs.	19	48	24	5
11.	Whether the syllabus can be covered within the adequate time?	19	19	24	33
12.	Proficiency level of students in the prerequisites.	19	33	19	24
13.	Contribution of course content to design thinking and critical analysis.	24	24	29	19
14.	Is timely coverage of the curriculum possible in the mentioned number of hours?	14	19	43	19
15.	The curriculum/courses of these subjects increased my knowledge and perspective on subjects in the area.	29	29	24	18



# New Prince Shri Bhavani College of Engineering and Technology

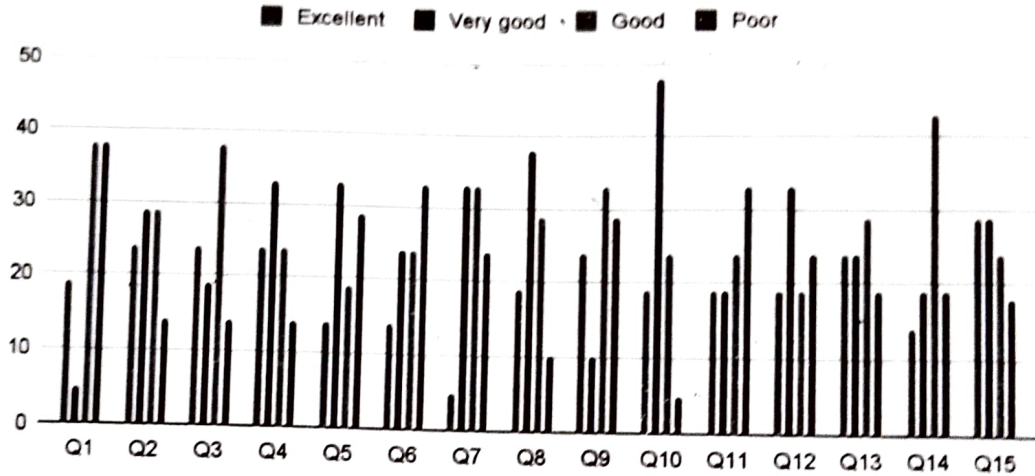


Tambaram-Velachery Main Road, Santhosapuram, Chennai-600 073

www.facebook.com/nprshriofficial | twitter.com/nprshri | www.instagram.com/nprshri

## Department of Computer Science and Engineering

Points scored



**Inference:**

Activities related to programming , extra lab experiments application oriented are suggested.

**Action Suggested:**

Club activities can be planned for programming , motivating the students to do mini projects.

HOD  
28/12/2023

PRINCIPAL  
NEW PRINCE SHRI BHAVANI COLLEGE OF  
ENGINEERING & TECHNOLOGY  
GOWRIVAKKAM, CHENNAI



# NEW PRINCE SHRI BHAVANI COLLEGE OF ENGINEERING AND TECHNOLOGY

Affiliated to Anna University | Approved by AICTE | Accredited by NAAC  
Tambaram - Velachery Main Road, Santhosapuram, Chennai-600 073.



## EMPLOYERS FEEDBACK ON SYLLABUS

Academic Year: 2023 – 2024

### Analysis Report

S.No	Statements	Percentage of Response		
		HIGH	MEDIUM	LOW
1	Ability to lead a team efficiently (Q1)	47%	53%	0%
2	Leadership and professional ethics (Q2)	74%	26%	0%
3	Ability to apply knowledge to provide solutions (Q3)	84%	16%	0%
4	Proficiency in soft skills (Q4)	68%	32%	0%
5	Syllabus meets industrial standards (Q5)	79%	21%	0%
6	Relevancy of the syllabus for employability (Q6)	74%	26%	0%
7	Syllabus effectiveness in developing innovative thinking (Q7)	79%	21%	0%
8	Need base on the current syllabus. (Q8)	79%	21%	0%
9	Focus on the syllabus in the development of entrepreneurship. (Q9)	74%	26%	0%
10	Rate of hierarchical order of syllabus in the curriculum. (Q10)	79%	21%	0%

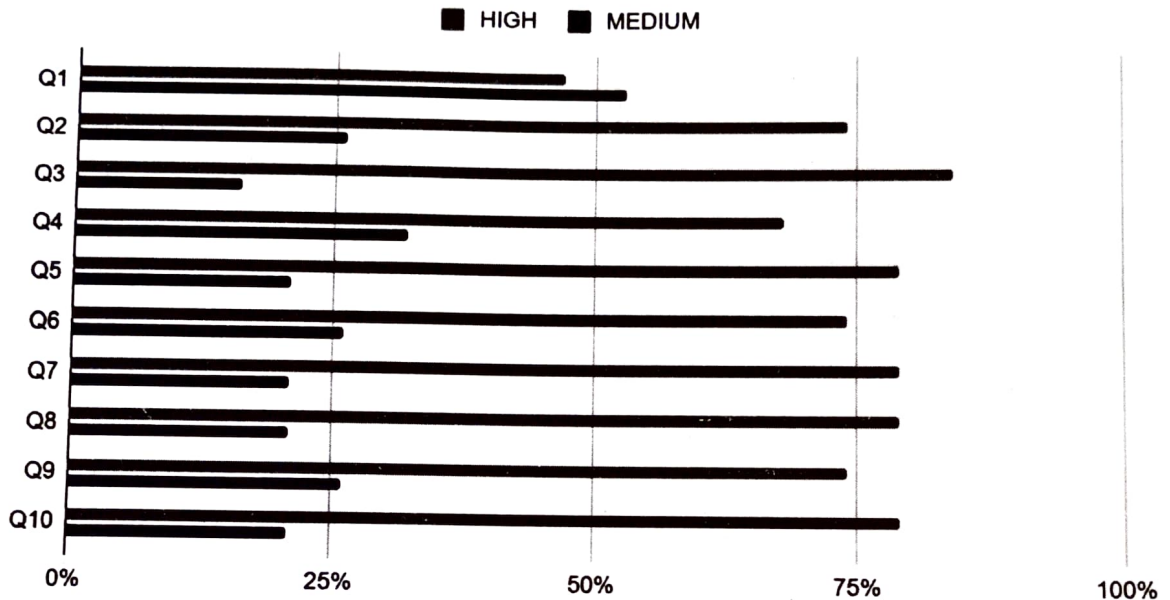


# NEW PRINCE SHRI BHAVANI COLLEGE OF ENGINEERING AND TECHNOLOGY

Affiliated to Anna University | Approved by AICTE | Accredited by NAAC  
Tambaram - Velachery Main Road, Santhosapuram, Chennai-600 073.



## Points scored



### INFERENCE:

The distribution of contact hours for soft skill training is not sufficient. The team lead training is not implemented and not related to real time skills.

### ACTION SUGGESTED:

- i) To conduct more Soft skill related training.
- ii) To organize Seminar/Workshop for Improving leadership skill and team work.

*[Signature]*  
HOD  
23/12/20

Head of the Department,  
Dept. of Computer Science & Engg.,  
New Prince Shri Bhavani College of Engg. & Tech.,  
Vengal Rao Nagar, Santhosapuram, Chennai-73.

*[Signature]*  
PRINCIPAL

PRINCIPAL  
NEW PRINCE SHRI BHAVANI COLLEGE OF  
ENGINEERING & TECHNOLOGY  
GOWRIVAKKAM, CHENNAI - 600 073



# New Prince Shri Bhavani College of Engineering and Technology



Tambaram-Velachery Main Road, Santhosapuram, Chennai-600 073

www.facebook.com/npsbceofficial | twitter.com/newprinceengg | www.instagram.com/newprinceengg\_official

## Department of Computer Science and Engineering

### Student Feedback on Syllabus Academic Year: 2023-2024 (V SEM)

#### Analysis Report

S.No	Statements	Percentage of Response			
		Excellent	Very good	Good	Poor
1.	How do you rate the syllabus of the courses that you have studied in relation to the competencies expected out of the courses?	100	0	0	0
2.	How do you rate the evaluation scheme designed for each of the courses?	67	33	0	0
3.	How do you rate the allocation of the credit to the courses?	67	33	0	0
4.	How do you rate the relevance of the unit in syllabus relevant to the courses?	56	44	0	0
5.	How do you rate the objective stated for each of the courses?	67	33	0	0
6.	How do you rate the elective offered in relation to the Technological advancement?	67	33	0	0
7.	Rate the size of syllabus in terms of load on the student?	78	22	0	0
8.	How do you rate the percentage of the courses having lab components?	56	44	0	0
9.	Rate the courses in terms of extra learning considering the design of the courses?	56	22	22	0
10.	How do you rate the experiments in relation to the real life applications?	67	33	0	0
11.	Rate the assessment pattern for CAT examination and end semester examination.	89	11	0	0
12.	How do you rate the distribution of the contact hours among the course components?	67	22	11	0
13.	How do you rate the relevance of the text books and reference books by their international recognition to the courses?	56	44	0	0
14.	How do you rate the loading of the courses in the semester?	78	22	0	0
15.	How do you rate the sequence of the courses that you have studied are in sequence to what you have studied in the previous semester?	89	11	0	0

#### Inference :

- The students had suggested for more practical training on Python.

#### Action Suggested:

- Hands-on training can be provided on Python coding connecting with real time applications.

*[Signature]*  
Head of the Department,  
Dept. of Computer Science & Engg.,  
New Prince Shri Bhavani College of Engg. & Tech.,  
Vengalvasal Main Road, Gowrivakkam, Chennai-73.

*[Signature]*  
PRINCIPAL

PRINCIPAL  
NEW PRINCE SHRI BHAVANI COLLEGE OF  
ENGINEERING & TECHNOLOGY  
GOWRIVAKKAM, CHENNAI



# New Prince Shri Bhavani College of Engineering and Technology



Tambaram-Velachery Main Road, Santhosapuram, Chennai-600 073

www.facebook.com/npsbceofficial | twitter.com/newprinceengg | www.instagram.com/newprinceengg\_official

## Department of Computer Science and Engineering

### Student Feedback on Syllabus Academic Year: 2023-2024 (VI SEM) Analysis Report

S.No	Statements	Percentage of Response			
		Excellent	Very good	Good	Poor
1.	How do you rate the syllabus of the courses that you have studied in relation to the competencies expected out of the courses?	89	11	0	0
2.	How do you rate the evaluation scheme designed for each of the courses?	78	22	0	0
3.	How do you rate the allocation of the credit to the courses?	67	33	0	0
4.	How do you rate the relevance of the unit in syllabus relevant to the courses?	44	56	0	0
5.	How do you rate the objective stated for each of the courses?	44	56	0	0
6.	How do you rate the elective offered in relation to the Technological advancement?	67	33	0	0
7.	Rate the size of syllabus in terms of load on the student?	67	33	0	0
8.	How do you rate the percentage of the courses having lab components?	44	56	0	0
9.	Rate the courses in terms of extra learning considering the design of the courses?	56	33	11	0
10.	How do you rate the experiments in relation to the real life applications?	67	33	0	0
11.	Rate the assessment pattern for CAT examination and end semester examination.	89	11	0	0
12.	How do you rate the distribution of the contact hours among the course components?	67	11	22	0
13.	How do you rate the relevance of the text books and reference books by their international recognition to the courses?	67	33	0	0
14.	How do you rate the loading of the courses in the semester?	89	11	0	0
15.	How do you rate the sequence of the courses that you have studied are in sequence to what you have studied in the previous semester?	67	33	0	0

**Inference :**

- The students had suggested extra contact hours.

**Action Suggested:**

- Contact hours can be increased for algorithm related paper to 7 hours per week.

*[Signature]*  
HOD

Head of the Department,  
Dept. of Computer Science & Engg.,  
New Prince Shri Bhavani College of Engg. & Tech.,

*[Signature]*  
PRINCIPAL

PRINCIPAL  
NEW PRINCE SHRI BHAVANI COLLEGE OF