



# NEW PRINCE SHRI BHAVANI COLLEGE OF ENGINEERING AND TECHNOLOGY

Affiliated to Anna University | Approved by AICTE | Accredited by NAAC  
Tambaram - Velachery Main Road, Santhosapuram, Chennai-600 073.



Ph: 044 22780303 | [www.newprinceshribhavani.com](http://www.newprinceshribhavani.com)

## **6.1.2 - The effective leadership is visible in various institutional practices such as decentralization and participative management.**

The institute has a culture of decentralized administrative network having inter-relationship in all activities. To pursue the decentralized administrative framework, the organization delegates authority to the departments. Governing Council is the supreme authority to fix the perspective policy, strategies, financial planning and management. Principal implements the plans and policies of the College with the support of the management, as decided by Governing council and IQAC. Principal ensures the smooth functioning of the institution with the support of Head of the Departments. At the department level Class in charges coordinate with Head of the department for smooth functioning. Principal and Department heads share the responsibility of implementing policies.

There are as more than 20 active committees in the college which work constantly to uphold all-round development of the students.



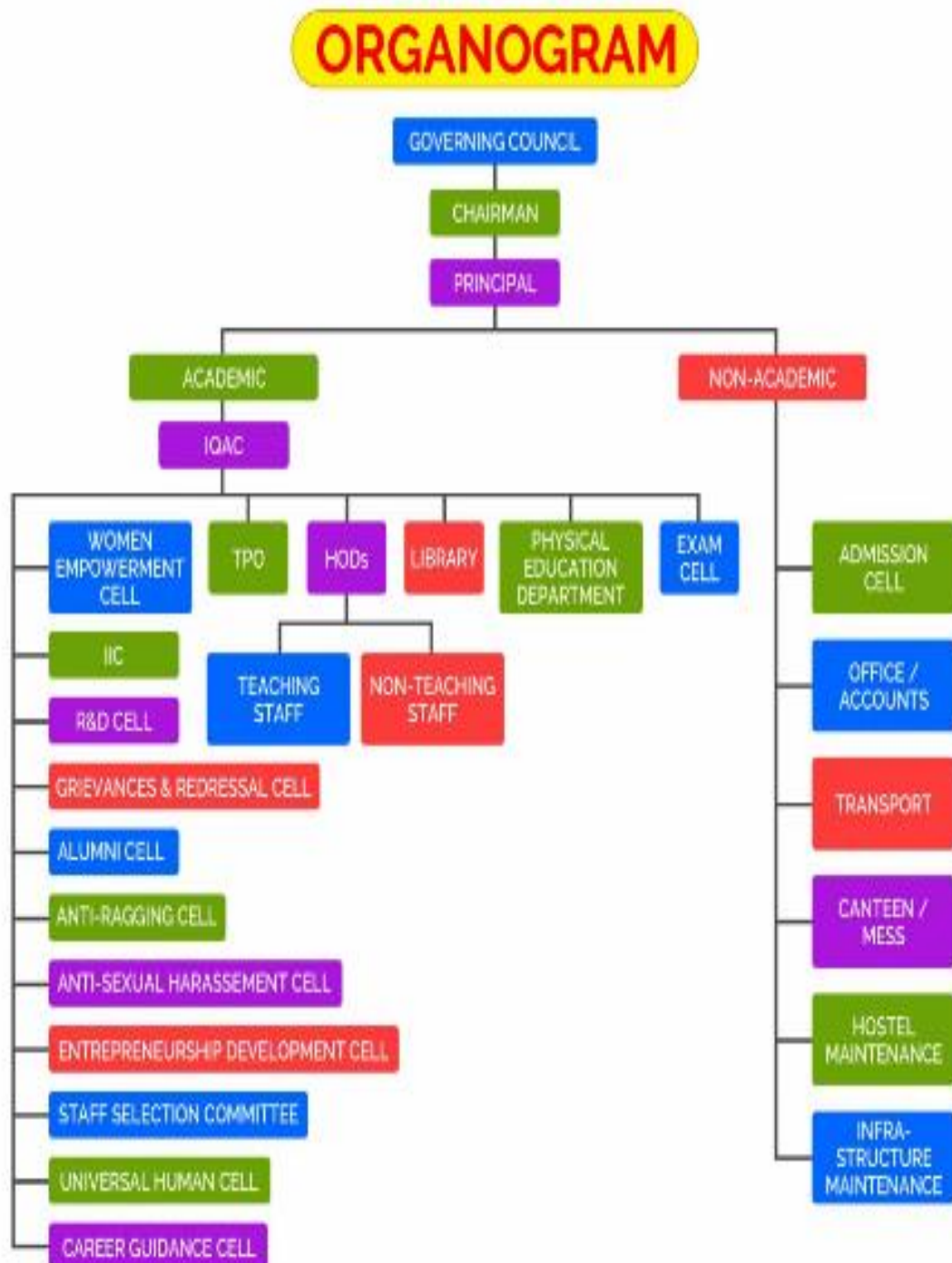
# NEW PRINCE SHRI BHAVANI COLLEGE OF ENGINEERING AND TECHNOLOGY



Affiliated to Anna University | Approved by AICTE | Accredited by NAAC  
Tambaram - Velachery Main Road, Santhosapuram, Chennai-600 073.

Ph: 044 22780303 | [www.newprinceshribhavani.com](http://www.newprinceshribhavani.com)

## Administrative Structure





# NEW PRINCE SHRI BHAVANI COLLEGE OF ENGINEERING AND TECHNOLOGY

Affiliated to Anna University | Approved by AICTE | Accredited by NAAC  
Tambaram - Velachery Main Road, Santhosapuram, Chennai-600 073.



Ph: 044 22780303 | [www.newprinceshribhavani.com](http://www.newprinceshribhavani.com)

## List of Committees

1. Governing Council
2. Internal Quality Assurance Cell (IQAC)
3. Institution Innovation Council Cell (IIC)
4. Academic Advisory Committee
5. Research & Development (R&D) Cell
6. Training and Placement Cell
7. Alumni Cell
8. Exam Cell
9. Career Guidance Cell
10. Entrepreneurship Development Cell
11. Universal Human Cell (UHV)
12. Library Committee
13. Sports Committee
14. Transport Committee
15. Hostel Committee
16. Women Empowerment Cell
17. Time Table Committee
18. Anti Ragging Committee
19. Students Grievances Cell
20. Anti Sexual Harassment Cell



# NEW PRINCE SHRI BHAVANI COLLEGE OF ENGINEERING AND TECHNOLOGY

Affiliated to Anna University | Approved by AICTE | Accredited by NAAC  
Tambaram - Velachery Main Road, Santhosapuram, Chennai-600 073.



Ph: 044 22780303 | [www.newprinceshribhavani.com](http://www.newprinceshribhavani.com)

## Governing Council

The main purpose of the Governing body is to decide the overall strategic direction and educational character of the college and ensure its overall well-being and financial solvency. Institute has a governing body that support proper administration and constituted with defined duties and responsibilities. The frequency of Governing Council meeting is once per year.

The composition of the Governing Council is as follows:

SL. NO.	NAME	POSITION
1	Thiru. K.LOGANATHAN Founder Chairman, New Prince Group of Institutions	Chairman
2	Tmt. V.S.MAHALAKSHMI Secretary, New Prince Group of Institutions	Member
3	Mr. L.NAVEEN PRASAD Vice-Chairman, New Prince Group of Institutions	Member
4	Prof. A.SWAMINATHAN Director, New Prince Shri Bhavani College of Engineering and Technology	Member
5	Dr.T.SARAVANAN Principal, New Prince Shri Bhavani College of Engineering and Technology	Member
6	Dr. T.SUNDER SELWYN Principal, Prince Dr. K.Vasudevan College of Engineering	Member
7	Mr. K.PARTHASARATHY Administrative Officer, Prince Shri Venkateshwara Padmavathy Engineering College	Member
7	Dr. S.RAGHU Assistant Professor, Govt. Arts College for Men	Member
8	Dr. V.DHAMODARAN Assistant Professor & Head Dept. Of Business Administration, Govt. Arts College for Men	Member



# NEW PRINCE SHRI BHAVANI COLLEGE OF ENGINEERING AND TECHNOLOGY



Affiliated to Anna University | Approved by AICTE | Accredited by NAAC  
Tambaram - Velachery Main Road, Santhosapuram, Chennai-600 073.

Ph: 044 22780303 | [www.newprinceshribhavani.com](http://www.newprinceshribhavani.com)

9	Mr. ARUN ANNAMALAI Regional Manager	Member
10	Mr. V.S.JEYAPRAKASH CEO, Shri Yespee L Hardware	Member
11	Mr. P.C.PRAVEEN KUMAR CEO, Appstar Global Pvt. Ltd.,	Member

## Responsibilities/Functions of the Governing Council:

- The Governing Council approves the mission and strategic vision of the institution, long term business plans and annual budgets based on the inputs from the stakeholders.
- The council ensures the establishment and monitoring systems of control and accountability including financial & operational controls and risk assessment for handling internal grievances.
- Fixing the fee structure and any charges applicable in accordance with the recommendation of the IQAC and prescribed fee structure of affiliating university.
- Approving the request for development of infrastructure and implementing the new program of study in degree level.
- The Chairperson is responsible for leading the governing body, is also responsible for its effectiveness and ensures that the institution is well connected with the stakeholders.
- To ensure the implementation of rules and regulations prescribed by AICTE and Anna University
- To monitor the academic activities of the college.
- Assure proper maintenance and management of the institution.



# NEW PRINCE SHRI BHAVANI COLLEGE OF ENGINEERING AND TECHNOLOGY



Affiliated to Anna University | Approved by AICTE | Accredited by NAAC  
Tambaram - Velachery Main Road, Santhosapuram, Chennai-600 073.  
Ph: 044 22780303 | [www.newprinceshribhavani.com](http://www.newprinceshribhavani.com)

## GOVERNING COUNCIL MEETING





# NEW PRINCE SHRI BHAVANI COLLEGE OF ENGINEERING AND TECHNOLOGY

Affiliated to Anna University | Approved by AICTE | Accredited by NAAC  
Tambaram - Velachery Main Road, Santhosapuram, Chennai-600 073.



Ph: 044 22780303 | [www.newprinceshribhavani.com](http://www.newprinceshribhavani.com)

## Internal Quality Assurance Cell

The Internal Quality Assurance Cell (IQAC) is a system for conscious, consistent and catalytic action to improve the academic and administrative performance of the institution. IQAC monitors the maintenance of quality in all areas of the institutional activities. It is formed in accordance with the guidelines and norms set by NAAC, it tries to ensure that quality is strictly maintained, sustained and augmented by taking the needs of all the stakeholders into consideration. The cell helps in ensuring most effective participation and contribution of all the stakeholders. They are always kept informed about the various policies, mechanisms and procedures related to quality assurance. The suggestions and recommendations from all stakeholders are seriously considered and proper actions are taken by IQAC.

### Committee Members:

Sl. No.	NAME	POSITION
1	Thiru. K. Loganathan, Chairman, New Prince Shri Bhavani Group of Institutions	Management Member
2	Tmt. V. S. Mahalakshmi, Secretary, New Prince Shri Bhavani Group of Institutions	Management Member
3	Mr. L. Naveen Prasad, Vice-Chairman, New Prince Shri Bhavani Group of Institutions	Management Member
4	Dr.T.Saravanan, Principal, New Prince Shri Bhavani College of Engineering and Technology	IQAC - Chairman
5	Dr.G.Durgadevi, Head - Department of ECE, New Prince Shri Bhavani College of Engineering and Technology	IQAC - Coordinator
6	Prof. A.Swaminathan, Director, New Prince Shri Bhavani College of Engineering and Technology	Senior Administrative Member



# NEW PRINCE SHRI BHAVANI COLLEGE OF ENGINEERING AND TECHNOLOGY



Affiliated to Anna University | Approved by AICTE | Accredited by NAAC  
Tambaram - Velachery Main Road, Santhosapuram, Chennai-600 073.

Ph: 044 22780303 | [www.newprinceshribhavani.com](http://www.newprinceshribhavani.com)

7	Mrs.D.R.Anita Sofia Liz, Head - Department of CSE, New Prince Shri Bhavani College of Engineering and Technology	Internal Member
8	Dr.S.Parthasarathy, Head - Department of EEE, New Prince Shri Bhavani College of Engineering and Technology	Internal Member
9	Mr.K.Thamilarasan, Head - Department of Mechanical Engineering, New Prince Shri Bhavani College of Engineering and Technology	Internal Member
10	Dr. M. Sindhuja, Head - Department of Information Technology, New Prince Shri Bhavani College of Engineering and Technology	Internal Member
11	Mr.A.Sekar, Head - Department of Civil Engineering, New Prince Shri Bhavani College of Engineering and Technology	Internal Member
12	Mr.M.Manikandan, Head, Training and Placement, New Prince Shri Bhavani College of Engineering and Technology	Internal Member
13	Mr.P.C.Praveen Kumar, CEO, App Star Global, Chennai	External Member
14	Ms.G.Jeeva Kadirvani, Lead Analyst, Caterpillar India Pvt Ltd., Chennai	Alumni Representative
15	Mr.P.Nithish, Student, ECE Dept., New Prince Shri Bhavani College of Engineering and Technology	Student Representative
16	Ms. V. S. Subeeksha, Student, ECE Dept., New Prince Shri Bhavani College of Engineering and Technology	Student Representative





# NEW PRINCE SHRI BHAVANI COLLEGE OF ENGINEERING AND TECHNOLOGY

Affiliated to Anna University | Approved by AICTE | Accredited by NAAC  
Tambaram - Velachery Main Road, Santhosapuram, Chennai-600 073.

Ph: 044 22780303 | [www.newprinceshribhavani.com](http://www.newprinceshribhavani.com)



## Responsibilities/Functions:

- IQAC co-ordinates number of activities in the college like academic and administrative auditing, organizing seminars based on the concepts related to quality.
- Training programmes are annually conducted both for teaching and administrative staff. Several meetings has been conducted throughout the academic year that covers the activities and achievements of all departments.
- The members discuss about the necessary steps to be taken to improve the quality of the institution.
- Various innovative techniques practiced by others are also discussed in the meeting.
- The discussions result helps modifications, improvements and rectifications.
- The annual academic and administrative auditing helps in realizing the present status of the institution in these areas and helps in improving the same.
- The feedback system also ensures remedial measures and consequent improvements.
- It also makes sincere efforts to inculcate a research culture towards faculty and students under the auspices of the Research and Development Cell.

## IQAC MEETING





# NEW PRINCE SHRI BHAVANI COLLEGE OF ENGINEERING AND TECHNOLOGY

Affiliated to Anna University | Approved by AICTE | Accredited by NAAC  
Tambaram - Velachery Main Road, Santhosapuram, Chennai-600 073.

Ph: 044 22780303 | [www.newprinceshribhavani.com](http://www.newprinceshribhavani.com)



## Academic Advisory Committee

To have an efficient academic planning and for future development activities an advisory committee with the following noted academicians in the field of technical education, industrial experts, alumni has been constituted. The committee performs regular meeting twice a year.

**New Prince Shri Bhavani**  
College of Engineering and Technology

Tambaram-Velachery Main Road, Santhosapuram, Chennai-600 073  
www.facebook.com/npsbcetofficial | twitter.com/newprinceengg | www.instagram.com/newprinceengg\_official

**Department of Electronics and Communication Engineering**  
**ACADEMIC ADVISORY COMMITTEE**  
ACADEMIC YEAR :: 2020 – 2021 (EVEN SEMESTER) **Date: 15-12-2020**

In order to have an efficient academic planning and for future development activities an advisory committee with the following noted academicians in the field of technical education has been constituted.

<b>CHAIR PERSON</b>	Dr. G.Durgadevi, HOD/ECE,
<b>MEMBERS</b>	Ms.V.Hemamalini, AP/ECE, Dr. C.F. Theresa Cenate, Prof/EEE, Dr. M. Sindhuja, AP/IT, Dr. A. Buckshumiyam, Assoc.Prof/MECH,
<b>INDUSTRIAL EXPERTS</b>	Mr.A.R.Ranganathan, Proprietor/Ohmtronixs,Chennai.
<b>ACADEMIC PERSON</b>	Dr. K.Sujatha, Prof /EEE, Dr.M.G.R Educational and Research Institute, Chennai.
<b>ALUMINI</b>	Ms. G.Jeeva kadirvani, Project manager, Royal Enfield,Chennai.

**HOD**  
15/12/2020  
Head of the Department  
Dept. of Electronics & Communication Engg.  
New Prince Shri Bhavani College of Engg. & Tech.,  
Vengalvasal Main Road, Gowrivakkam, Chennai -




# NEW PRINCE SHRI BHAVANI COLLEGE OF ENGINEERING AND TECHNOLOGY



Affiliated to Anna University | Approved by AICTE | Accredited by NAAC  
Tambaram - Velachery Main Road, Santhosapuram, Chennai-600 073.

Ph: 044 22780303 | [www.newprinceshribhavani.com](http://www.newprinceshribhavani.com)



## New Prince Shri Bhavani College of Engineering and Technology

INSTITUTIONS  
EMBRACING  
INTEGRITY

ARIIA

SUSTAINABLE  
DEVELOPMENT  
GOALS

NAAC  
ACCREDITED

nirf

ISO 9001  
2015  
CERTIFIED

Tambaram-Velachery Main Road, Santhosapuram, Chennai-600 073  
f [www.facebook.com/npsbcetofficial](https://www.facebook.com/npsbcetofficial) t [twitter.com/newprinceengg](https://twitter.com/newprinceengg) @ [www.instagram.com/newprinceengg\\_official](https://www.instagram.com/newprinceengg_official)

### Department of Electronics and Communication Engineering

#### CIRCULAR

ACADEMIC YEAR :: 2020- 2021 (EVEN SEMESTER)

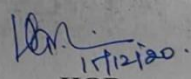
NPSBCET/ECE/2020-21/AAC Cir. No.02 **Date:** 15-12-2020

It is informed that the Academic advisory committee meeting is scheduled for the Department of ECE on **Wednesday** (16-12-2020). Respective committee members are requested to attend the meeting.

Agenda:

- (1) Department and Industry Interaction
- (2) Student Performance
- (3) Student feedback related to teaching and learning
- (4) Alumni interaction
- (5) Faculty Contribution
- (6) Activity leads to Quality improvements

**Venue:** @ ECE Department Library  
**Date & Time:** 16-12-2020@ 10.00 AM

  
**HOD**  
Head of the Department  
Dept. of Electronics & Communication Engg.,  
New Prince Shri Bhavani College of Engg. & Tech.,  
Vengalvasal Main Road, Gowrivakkam, Chennai - 73



# NEW PRINCE SHRI BHAVANI COLLEGE OF ENGINEERING AND TECHNOLOGY

Affiliated to Anna University | Approved by AICTE | Accredited by NAAC  
Tambaram - Velachery Main Road, Santhosapuram, Chennai-600 073.

Ph: 044 22780303 | www.newprinceshribhavani.com



## New Prince Shri Bhavani College of Engineering and Technology



Tambaram-Velachery Main Road, Santhosapuram, Chennai-600 073

f www.facebook.com/npsbcetofficial t twitter.com/newprinceengg i www.instagram.com/newprinceengg\_official

### Department of Electronics and Communication Engineering

#### MINUTES OF MEETING

ACADEMIC YEAR :: 2020 – 2021 (EVEN SEMESTER)

Date & Time : 16-12-2020@ 10.00 AM

Venue : ECE Department Library

Members Present

Sl. No.	Name of the Staff Members	Designation	Signature
1.	Dr. G.Durgadevi	HOD/ECE	
2.	Ms.V.Hemamalini	AP/ECE	
3.	Dr. C.F. Theresa Cenate,	Prof/EEE	
4.	Dr. M. Sindhuja,	AP/IT	
5.	Dr. A. Buckshumiyam	Assoc.Prof/MECH	
6.	Mr.A.R.Ranganathan	Properiator/Ohmtronixs, Chennai	
7.	Dr. K.Sujatha	Prof /EEE, Dr.M.G.R Educational and Research Institute, Chennai.	
8.	Ms. G.Jeeva kadirvani	Project manager, Royal Enfield,Chennai.	



# NEW PRINCE SHRI BHAVANI COLLEGE OF ENGINEERING AND TECHNOLOGY



Affiliated to Anna University | Approved by AICTE | Accredited by NAAC  
Tambaram - Velachery Main Road, Santhosapuram, Chennai-600 073.

Ph: 044 22780303 | [www.newprinceshribhavani.com](http://www.newprinceshribhavani.com)



## New Prince Shri Bhavani College of Engineering and Technology



Tambaram-Velachery Main Road, Santhosapuram, Chennai-600 073

[www.facebook.com/npsbcetofficial](https://www.facebook.com/npsbcetofficial) [twitter.com/newprinceengg](https://twitter.com/newprinceengg) [www.instagram.com/newprinceengg\\_official](https://www.instagram.com/newprinceengg_official)

### Department of Electronics and Communication Engineering

The meeting started with Welcome address by Dr.G.Durgadevi, Heads of Department of ECE, extending a warm welcome to Department advisory Committee members.

The following points are discussed.

Sl. No.	Agenda Item	Topic	Discussion
1	Department and Industry Interaction	Project Guidance	Committee members suggested to do/support the Final Year Project as a field work project.
		MOU	Chairperson shared the details of MOU signed with the industry and impact of MOU's.
2.	Student Performance	Selection of Elective paper	Member of AAC suggested selecting the course which enriches the student knowledge towards recent trend and technology development. Selection of elective for III year: EC8004 Wireless Network IV year: GE8076 Professional Ethics Engineering EC8094 Satellite Communication
		Student's achievement	The committee members suggested to participate the student in extra and co-curricular activities and to publish the final year project in symposium/ National/ International Conference.
		Workshop	Experts are advised to conduct Workshop on "Artificial Intelligence and Robotic Vision" to enrich the knowledge of the students.
		Internship	Decided to arrange 45 days Internship to the students to collaborate the institute with Industry.
3.	Student feedback related to teaching and learning	Certification Course	Based on analysis of feedback given by student, Team members guided to conduct a add-on Certificate course with the MOU signed industry on CC10607 – Bionic Device Design" and to improve their technical skill.



# NEW PRINCE SHRI BHAVANI COLLEGE OF ENGINEERING AND TECHNOLOGY



Affiliated to Anna University | Approved by AICTE | Accredited by NAAC  
Tambaram - Velachery Main Road, Santhosapuram, Chennai-600 073.

Ph: 044 22780303 | [www.newprinceshribhavani.com](http://www.newprinceshribhavani.com)



## New Prince Shri Bhavani College of Engineering and Technology

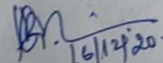


Tambaram-Velachery Main Road, Santhosapuram, Chennai-600 073

[www.facebook.com/npsbcetofficial](https://www.facebook.com/npsbcetofficial) [twitter.com/newprinceengg](https://twitter.com/newprinceengg) [www.instagram.com/newprinceengg\\_official](https://www.instagram.com/newprinceengg_official)

### Department of Electronics and Communication Engineering

		Training Program	Academic experts suggested conducting a program related to Soft skills and placement training more effectively.
4.	Alumni interaction	Alumni Feedback Analysis	Alumni expert suggested to their junior students exposed to the diversity of jobs in the core field. Also suggested to create an Alumni network to share the experience.
5.	Faculty Contribution	STTP/FDP/Journal/Patent	To enrich the knowledge of faculties in R&D activities, Member of academic advisory committee suggested to HOD of ECE, to insist their department staff members to participate in STTP/FDP/International Conference with the outside/inside of the institution. R&D cell should insist research scholar of ECE dept to upgrade their work to get patent.
6.	Activity leads to Quality improvements	Webinar Series	Industry experts suggested organizing a series of an Entrepreneur webinar to aware the students about various schemes introduced by Central Government and start-ups.
The meeting was closed by extending a heartfelt vote of thanks by HOD/ECE for the valuable suggestion given by the Academic Advisory Members towards the progress of the Department.			

  
16/12/20  
HOD

Head of the Department  
Dept. of Electronics & Communication Engg.,  
New Prince Shri Bhavani College of Engg. & Tech.,  
Vengalvasal Main Road, Govrivakkam, Chennai -

- Copy to:
1. Principal's Office
  2. IQAC
  3. Department File



# NEW PRINCE SHRI BHAVANI COLLEGE OF ENGINEERING AND TECHNOLOGY

Affiliated to Anna University | Approved by AICTE | Accredited by NAAC  
Tambaram - Velachery Main Road, Santhosapuram, Chennai-600 073.

Ph: 044 22780303 | [www.newprinceshribhavani.com](http://www.newprinceshribhavani.com)



## Various Committee List

To facilitate smooth working environment in the Institution, there are various committees that are composed and governed by stakeholders, faculties and students with various duties and responsibilities. The members of these committees conduct meetings once/ twice per semester or more depending upon the need. The minutes of the meeting are recorded and maintained.

### 1. Research & Development (R&D) Cell:

New Prince Shri Bhavani College of Engineering and Technology (NPSBCET) gives utmost importance for research works. Ever since its inception in the year 2008, the Institution has taken concerted efforts for Innovation and Research. Research Cell was constituted to strengthen research activities and also to industrial research experience. Research Cell provides support and guidance to enable faculty and students come up with research ideas and innovative development towards relevant to industry as well as society.

### **Committee Members:**

SL. No.	NAME	DESIGNATION	POSITION
1	Dr.M.Sindhuja	Associate Professor/IT	Co-ordinator
2	Dr.R.Akhila	Professor/CSE	Member
3	Dr.M.Prakash	Associate Professor/CSE	Member
4	Ms.M.I.Anju	Assistant Professor/IT	Member
5	Dr.C.F.Theresa Cenate	Professor/EEE	Member
6	Mr.A.Sekar	Head, Department of Civil Engg.	Member



# NEW PRINCE SHRI BHAVANI COLLEGE OF ENGINEERING AND TECHNOLOGY

Affiliated to Anna University | Approved by AICTE | Accredited by NAAC  
Tambaram - Velachery Main Road, Santhosapuram, Chennai-600 073.

Ph: 044 22780303 | [www.newprinceshribhavani.com](http://www.newprinceshribhavani.com)



## Responsibilities/Functions:

- The Research and Development (R&D) Cell provides inter-disciplinary approach in solving problems related to Information Technology.
- The research proposals are being prepared and sent to various funding agencies like DST, AICTE, DIT, FIST, DRDO, CSIR, TNSCST, etc.,
- The cell also sends proposals to various funding agencies under MODROBS scheme. The R&D Cell promotes innovative ideas and concepts in the selected areas to come up with new product development.
- The R&D cell motivates students and faculty members to publish papers in the refereed journals.
- The R&D cell is taking initiatives for applying Patents for innovative ideas and products.

The cell is taking initiatives to develop course modules for the core subject.

- The R&D cell conducts workshops, seminars and FDPs in the specialized areas of research and innovation.

## Smart India Hackathon







# NEW PRINCE SHRI BHAVANI COLLEGE OF ENGINEERING AND TECHNOLOGY



Affiliated to Anna University | Approved by AICTE | Accredited by NAAC  
Tambaram - Velachery Main Road, Santhosapuram, Chennai-600 073.  
Ph: 044 22780303 | [www.newprinceshribhavani.com](http://www.newprinceshribhavani.com)





# NEW PRINCE SHRI BHAVANI COLLEGE OF ENGINEERING AND TECHNOLOGY



Affiliated to Anna University | Approved by AICTE | Accredited by NAAC  
Tambaram - Velachery Main Road, Santhosapuram, Chennai-600 073.

Ph: 044 22780303 | [www.newprinceshribhavani.com](http://www.newprinceshribhavani.com)

## International Conference



**New Prince Shri Bhavani**  
College of Engineering and Technology

Affiliated to Anna University | ISO 9001:2015 Certified | Accredited by NAAC  
Tambaram-Velachery Main Road, Santhosapuram, Chennai-600 073

**1431** Excellence First & Every Time

Hosting on  
 

---

 zoom  
link:  
<https://us02web.zoom.us/j/7626149360?pwd=OURSQ1NsZHp0TER3WHNFb3d0a2RkUT09>  
Meeting Id: 762 614 9360  
Password: npsbcet

---

 YouTube  
link:  
<https://tinyurl.com/icnaet20>

International Conference on  
Novelty in Applied Science,  
Engineering & Technology

## ICNAET'20

17th June 2020  
Inaugural : 10 am





Chief Guest  
**Dr. K.G.Parthiban**  
Adithya Institute of Technology,  
Coimbatore.



Guest of Honor  
**Dr. S. Balaji**  
Sri Venkateswara College  
of Technology, Chennai.



Session Chair  
**Dr. P.K.Chidambaram**  
Panimalar Engineering College,  
Chennai.

Further Details Contact  
**98840 27433**

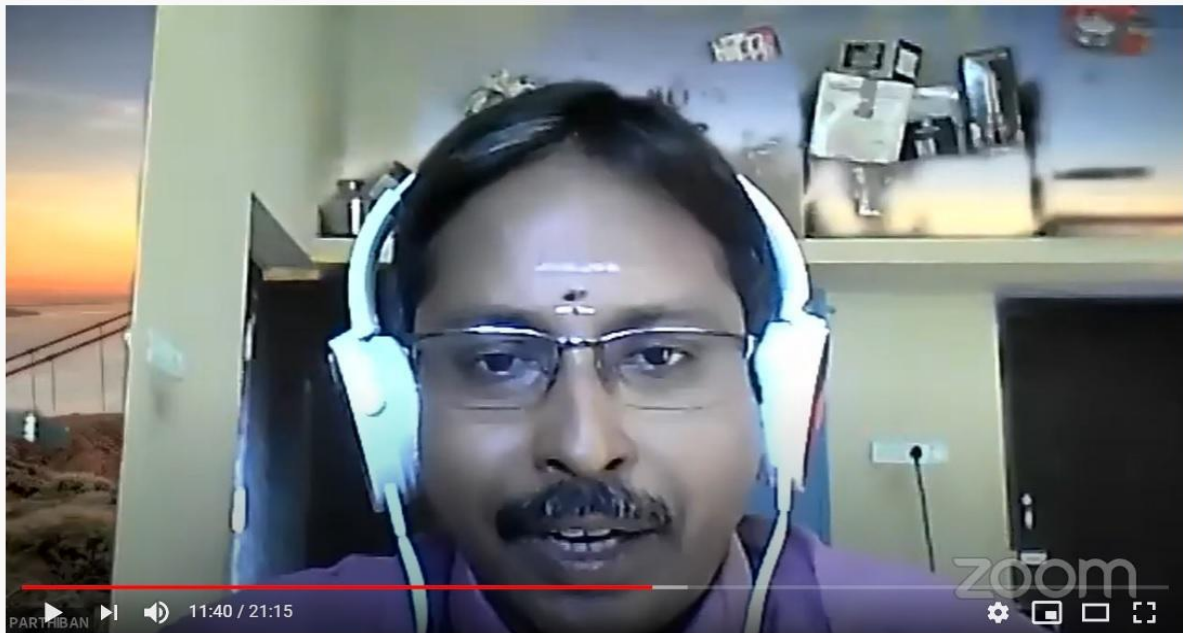
**Thiru. K.LOGANATHAN**  
CHAIRMAN

**Mr. L. NAVEEN PRASAD**  
VICE CHAIRMAN

**Mr. A.SWAMINATHAN**  
DIRECTOR

**Dr. T.SARAVANAN**  
PRINCIPAL

**Dr. P.K.CHIDAMBARAM**  
CONVENER/PROFESSOR/MECH.



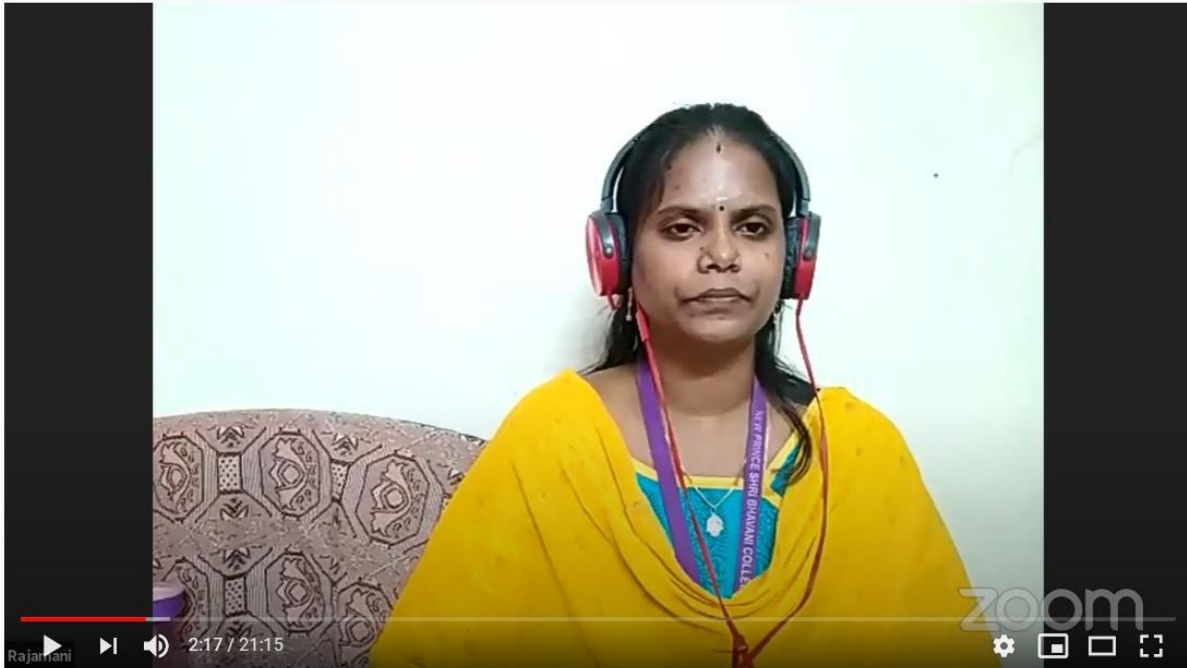
INTERNATIONAL CONFERENCE ON NOVELTY IN APPLIED SCIENCE, ENGINEERING & TECHNOLOGY (ICNAET'20)



# NEW PRINCE SHRI BHAVANI COLLEGE OF ENGINEERING AND TECHNOLOGY

Affiliated to Anna University | Approved by AICTE | Accredited by NAAC  
Tambaram - Velachery Main Road, Santhosapuram, Chennai-600 073.

Ph: 044 22780303 | [www.newprinceshribhavani.com](http://www.newprinceshribhavani.com)



INTERNATIONAL CONFERENCE ON NOVELTY IN APPLIED SCIENCE, ENGINEERING & TECHNOLOGY  
(ICNAET'20)

## 2. Alumni Cell

The Alumni Association of our college has completed 8 years of active functioning. The Association provides a forum for the Alumni for exchange of ideas on academics, research and placement activities. The membership is open for all the graduates of New Prince Shri Bhavani College of Engineering and Technology. The association is registered under Tamil Nadu Registration Societies Act, 1975. Alumnus from distinguished companies and institutions frequently visit the campus and provide guidance towards career development and placement assistance. Alumnus are invited as Guests of Honor for various functions organized, Resource persons for Guest lectures, Seminars, Symposia, Conferences and Motivating speech. They provide valuable feedback regarding the current Industry needs and motivate the students to take up innovative projects. The association meeting is organized once every year.



# NEW PRINCE SHRI BHAVANI COLLEGE OF ENGINEERING AND TECHNOLOGY

Affiliated to Anna University | Approved by AICTE | Accredited by NAAC  
Tambaram - Velachery Main Road, Santhosapuram, Chennai-600 073.



Ph: 044 22780303 | www.newprinceshribhavani.com

## Committee Members:

SL. NO	NAME	DESIGNATION	ROLE
1	Ms.V.Hemamalini	Assistant Professor/ECE	Coordinator
2	Ms.K.Blessing Christiana	Assistant Professor/IT	Member
3	Ms.M.Devi	Assistant Professor/EEE	Member
4	Mr.S.Santhosh	Assistant Professor/CSE	Member
5	Mr.D.Navaneetha Krishnan	Assistant Professor/MECH	Member
6	Ms.G.Swarnalakshmi	Assistant Professor/CIVIL	Member

## Responsibilities/Functions:

- To keep a roster of all Alumni of college and their pertinent data.
- To encourage, foster and promote close relations among the alumni themselves.
- To maintain a regular contact with the alumni.
- To provide a forum for the Alumni for exchange of ideas on academic, cultural and social issues of the day by organizing and coordinating reunion activities of the Alumni.
- To foster good rapport between the management, staff and students for the growth and development of the college to improve its public image.

  
**Form No. II**  
(See Rule 8 Of the TamilNadu Societies Registration Rules, 1978)  
**CERTIFICATE OF REGISTRATION UNDER SECTION 10 OF THE TAMIL NADU  
ACT, 1975 (TAMIL NADU ACT 27 OF 1975)**  
**CERTIFICATE OF REGISTRATION OF SOCIETIES**  
Sl. No. : 204 / 2017

I hereby Certify that  
**ALUMNI ASSOCIATION OF NEW PRINCE SHRI BHAVANI COLLEGE OF  
ENGINEERING AND TECHNOLOGY**  
has this day been Registered Under The Tamil Nadu Societies Registration Act, 1975  
(Tamil Nadu Act 27 of 1975).

Given under my hand at **CHENNAI SOUTH**  
this 27 th day of April 2017

Seal of the Registrar of Societies, Chennai South  
Station

Signature of the Registrar  
சென்னை தென் பகுதி சமூக சேவைகள் அமைச்சர்  
சென்னை



# NEW PRINCE SHRI BHAVANI COLLEGE OF ENGINEERING AND TECHNOLOGY

Affiliated to Anna University | Approved by AICTE | Accredited by NAAC  
Tambaram - Velachery Main Road, Santhosapuram, Chennai-600 073.

Ph: 044 22780303 | [www.newprinceshribhavani.com](http://www.newprinceshribhavani.com)



## Alumni Association organize Alumni Talk on “Session on –Early Stage Entrepreneur”



### New Prince Shri Bhavani College of Engineering and Technology

Affiliated to Anna University | ISO 9001:2015 Certified | Accredited by NAAC  
Tambaram-Velachery Main Road, Santhosapuram, Chennai-600 073



Dept. of Electronics & Communication Engineering &  
Alumni Association of NPSBCET  
jointly organizes  
**Session on - Early Stage Entrepreneur**  
(A part of National Innovation & Start-up Policy Implementation)

**21st Jan 2022  
@ 10.30 AM**

Hosting on  
  
[https://us06web.zoom.us/j/84851552714?  
pwd=ak1TaVRmRzR0THJKWEVwOEh6amp3cz09](https://us06web.zoom.us/j/84851552714?pwd=ak1TaVRmRzR0THJKWEVwOEh6amp3cz09)  
Meeting ID: 848 5155 2714  
Passcode: 1styear

  
<https://tinyurl.com/npsbyoutube>

**Speakers**



**Mr. B. Zuhail Ahamed,**  
Managing Director,  
Housewood Construction and Interiors,  
CHENNAI.



**Mr. E. Madhavan,**  
Managing Director,  
Housewood Construction and Interiors,  
CHENNAI.

Coordinator <b>Mrs. T. Annalakshmi,</b> Asst. Prof. / Dept. of ECE, 97910 10664	Alumni Coordinator <b>Mrs. V. Hemamalini,</b> Asst. Prof. / Dept. of ECE, 99520 38433	IIC Convener <b>Mr. D. Gowrishankar,</b> Asst. Prof., Dept. of ECE.	HOD <b>Dr. G. Durgadevi,</b> Dept. of ECE.	Principal <b>Dr. T. Saravanan</b>
--	--	---	--	--------------------------------------

[www.facebook.com/npsbcetofficial](https://www.facebook.com/npsbcetofficial) [twitter.com/newprinceengg](https://twitter.com/newprinceengg) [www.instagram.com/newprinceengg\\_official](https://www.instagram.com/newprinceengg_official)

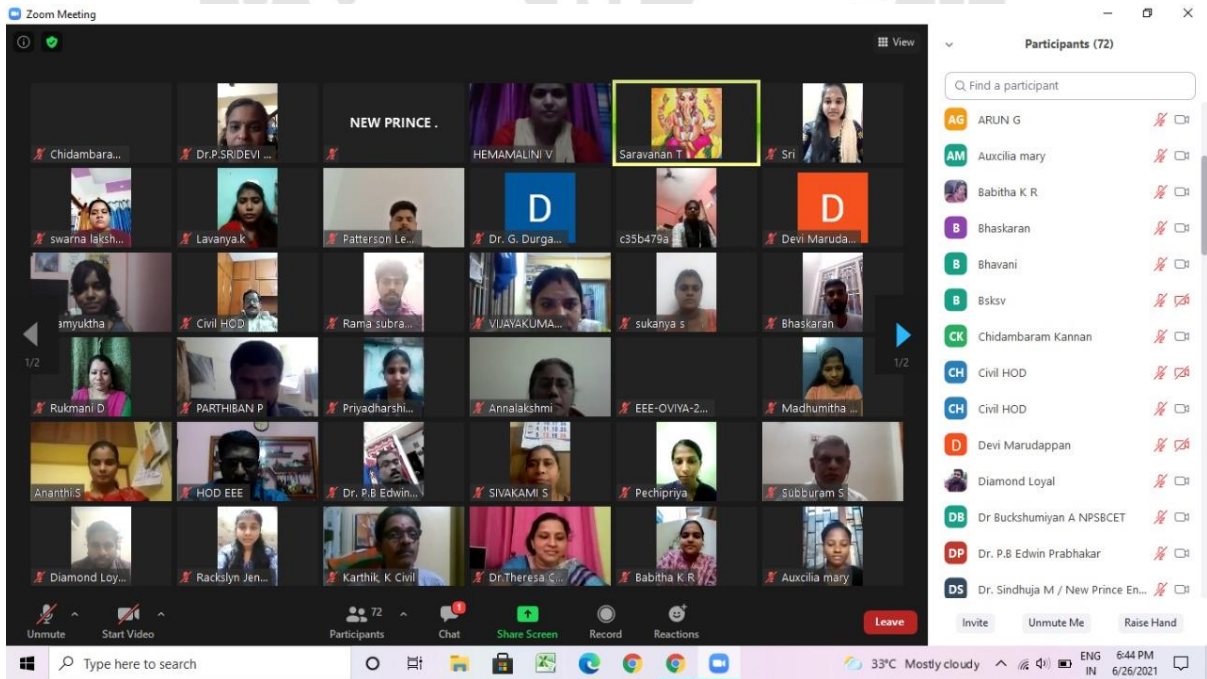
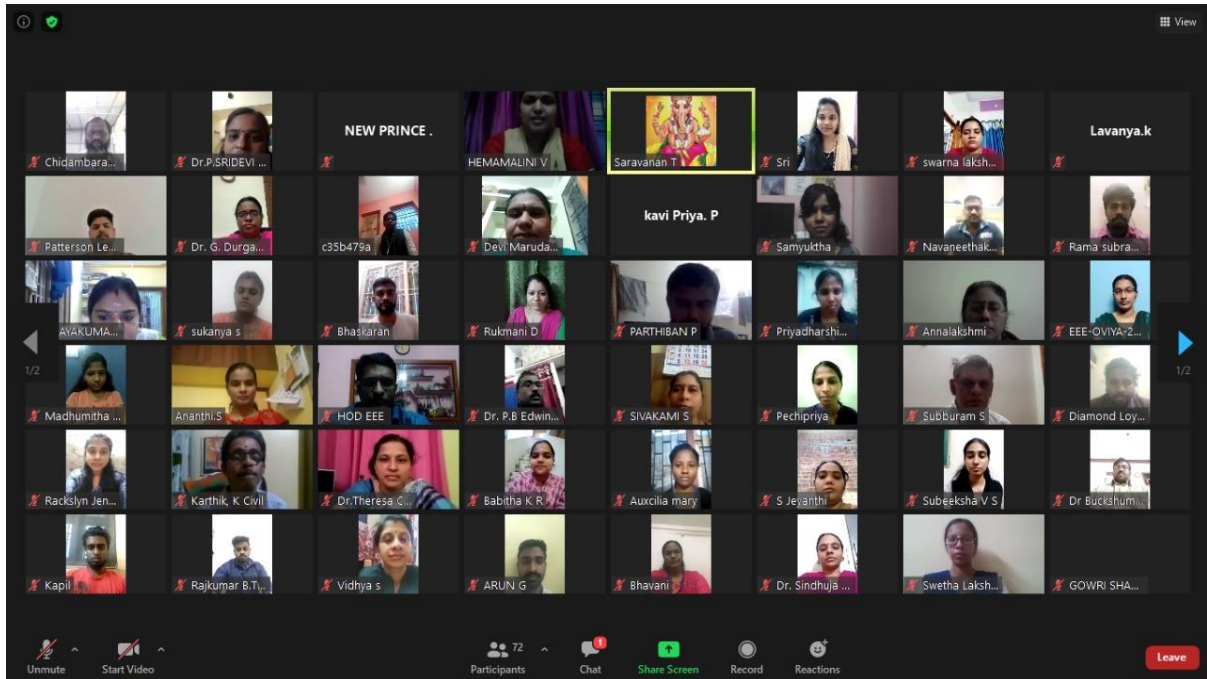


# NEW PRINCE SHRI BHAVANI COLLEGE OF ENGINEERING AND TECHNOLOGY



Affiliated to Anna University | Approved by AICTE | Accredited by NAAC  
Tambaram - Velachery Main Road, Santhosapuram, Chennai-600 073.

Alumni Meet 2020-2021 | 011-22780303 | www.newprinceshribhavani.com

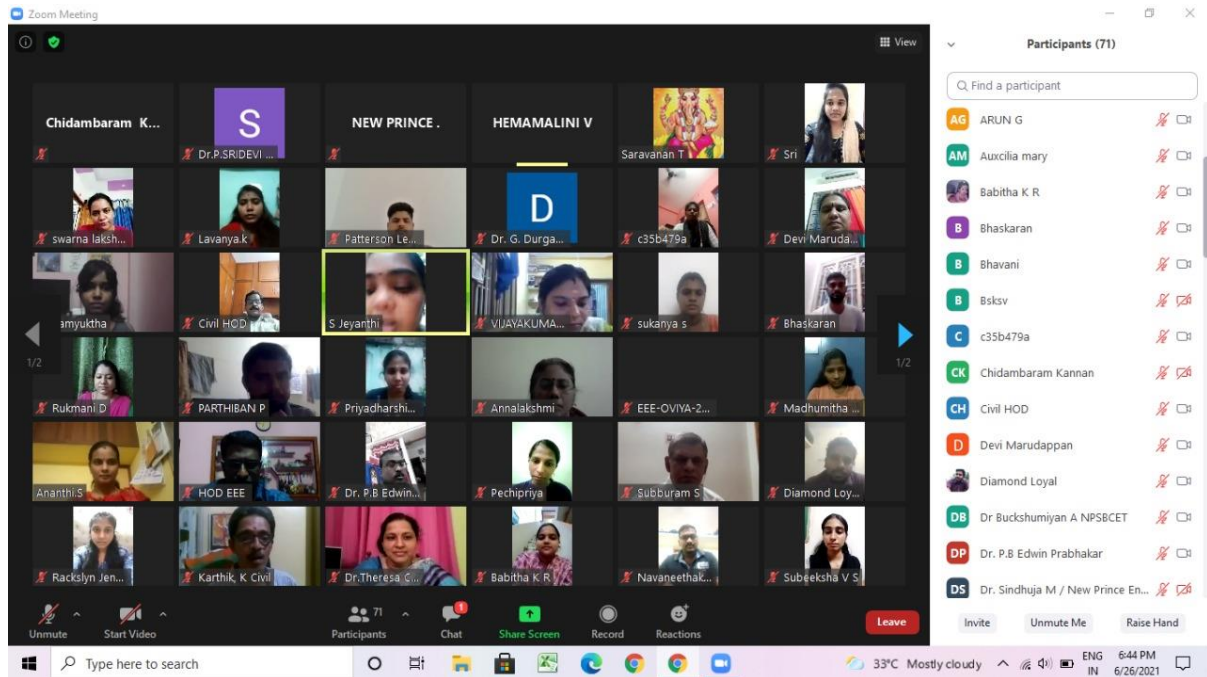




# NEW PRINCE SHRI BHAVANI COLLEGE OF ENGINEERING AND TECHNOLOGY



Affiliated to Anna University | Approved by AICTE | Accredited by NAAC  
Tambaram - Velachery Main Road, Santhosapuram, Chennai-600 073.  
Ph: 044 22780303 | [www.newprinceshribhavani.com](http://www.newprinceshribhavani.com)



## Alumni Meet 2019-2020





# NEW PRINCE SHRI BHAVANI COLLEGE OF ENGINEERING AND TECHNOLOGY

Affiliated to Anna University | Approved by AICTE | Accredited by NAAC  
Tambaram - Velachery Main Road, Santhosapuram, Chennai-600 073.



### **3. Exam Cell**

The committee monitors the internal assessment and university examinations conducted in the college campus and ensure whether the internal assessment exams are conducted according to university timetable. The committee organizes a meeting for every semester to ensure proper functioning of the cell by coordinating all the activities.

#### **Committee Members:**

S.NO	NAME	DESIGNATION	POSITION
1	Dr.T.Saravanan	Principal	Chairman
2	Mr. R. Gowri Shankar	Assistant Professor/ECE	Member
3	Ms.M.I.Anju	Assistant Professor/ECE	Member
4	Mr.S.Santhosh	Assistant Professor/CSE	Member
5	Ms.S.Karthika	Assistant Professor/IT	Member

#### **Responsibilities/Functions**

- To ensure Smooth conduction of university theory cum Practical Exams and Internal Assessment test.
- To monitor attendance, Internal Marks, Students Registration for University Examinations.
- To allot the halls during the conduct of exams and appoint hall superintendent for conduct of Theory Examination (prepare invigilators duties list well in advance).
- To verify the question paper for Internal Theory Examination.
- Preparing circulars regarding fees collection and intimate the procedure of last payment for students.
- Maintain the records pertaining to all examinations.
- To provide guidelines to faculties for conducting examination.





# NEW PRINCE SHRI BHAVANI COLLEGE OF ENGINEERING AND TECHNOLOGY

Affiliated to Anna University | Approved by AICTE | Accredited by NAAC  
Tambaram - Velachery Main Road, Santhosapuram, Chennai-600 073.

Ph: 044 22780303 | [www.newprinceshribhavani.com](http://www.newprinceshribhavani.com)



## **4. CAREER GUIDANCE CELL**

The purpose of Career guidance cell is to promote the interest of students who wish to pursue higher education with in India and abroad after their undergraduate studies. It exists to help the students to find and make their place in the world by developing self-knowledge, career options and resources through the various global professional networks, and empowering them with skills, tools, and confidence. The career guidance cell conducts meeting twice in a year.



# NEW PRINCE SHRI BHAVANI COLLEGE OF ENGINEERING AND TECHNOLOGY



Affiliated to Anna University | Approved by AICTE | Accredited by NAAC  
Tambaram - Velachery Main Road, Santhosapuram, Chennai-600 073.

Ph: 044 22780303 | [www.newprinceshribhavani.com](http://www.newprinceshribhavani.com)

## Committee Members:

S.NO	NAME	DESIGNATION	POSITION
1	Dr.T.Saravanan	Principal	Chairman
2	Mr. K. Manikandan	Placement Officer	Member
3	Ms. K. Blessing Christiana	Assistant Professor /IT	Member
4	Mr.C.Vengatesha Rajaperumal	Assistant Professor / MECH	Member
5	Mr.K.Sarathy	Assistant Professor /EEE	Member
6	Mr. P. Parthiban	Assistant Professor /ECE	Member
7	Ms. J. Malathi	Assistant Professor / CSE	Member

## Responsibilities/Functions:

- To provide necessary guidance and information to the students in shaping the future career.
- Provides relevant academic and career information to enable Students to cope up with the current industrial needs.
- Organizing Workshops and Seminars on Personality Development, Interpersonal relationship, Communication Skills, Interview Skills and Presentation Skills.
- Eminent resource persons from various sectors and esteemed institutions are invited for providing training to the students.



# NEW PRINCE SHRI BHAVANI COLLEGE OF ENGINEERING AND TECHNOLOGY



Affiliated to Anna University | Approved by AICTE | Accredited by NAAC  
Tambaram - Velachery Main Road, Santhosapuram, Chennai-600 073.  
Ph: 044 22780303 | [www.newprinceshribhavani.com](http://www.newprinceshribhavani.com)



## Workshop on “How to Crack the Interview”





# NEW PRINCE SHRI BHAVANI COLLEGE OF ENGINEERING AND TECHNOLOGY

Affiliated to Anna University | Approved by AICTE | Accredited by NAAC  
Tambaram - Velachery Main Road, Santhosapuram, Chennai-600 073.  
Ph: 044 22780303 | [www.newprinceshribhavani.com](http://www.newprinceshribhavani.com)



## Soft Skill Training Program





# NEW PRINCE SHRI BHAVANI COLLEGE OF ENGINEERING AND TECHNOLOGY

Affiliated to Anna University | Approved by AICTE | Accredited by NAAC  
Tambaram - Velachery Main Road, Santhosapuram, Chennai-600 073.

Ph: 044 22780303 | [www.newprinceshribhavani.com](http://www.newprinceshribhavani.com)



## 5. Entrepreneurship Development Cell

To create Entrepreneurship culture in the institutions at various levels UG/PG of the organization. The new innovative projects are found out from the student and make this project into useful and motivate the students to become an entrepreneur.

SL. No	NAME	DESIGNATION	POSITION
1	Dr. T. Saravanan	Principal	Chairman
2	Ms. M. Bhavani	Assistant Professor /MECH	Member
3	Mr. D. Gowrishankar	Assistant Professor /ECE	Member
4	Dr. M. Sindhuja	Associate Professor /IT	Member
5	Mr. K. Kumarasaravanan	Assistant Professor /EEE	Member
6	Dr. P. B. Edwin Prabakar	Professor/CSE	Member



# NEW PRINCE SHRI BHAVANI COLLEGE OF ENGINEERING AND TECHNOLOGY



Affiliated to Anna University | Approved by AICTE | Accredited by NAAC  
Tambaram - Velachery Main Road, Santhosapuram, Chennai-600 073.

Ph: 044 22780303 | [www.newprinceshribhavani.com](http://www.newprinceshribhavani.com)

## Responsibility/Functions:

- To motivate the students to develop their ideas into project proposals/products
- Coordinating with university EDP cell and its activities.
- Arrange seminars related to entrepreneurship and Angel investors.
- To conduct the skill development program with the innovative research ideas and getting fund from the DST.

## Motivated the Student to initiate the Entrepreneurship in our institution premises





# NEW PRINCE SHRI BHAVANI COLLEGE OF ENGINEERING AND TECHNOLOGY

Affiliated to Anna University | Approved by AICTE | Accredited by NAAC  
Tambaram - Velachery Main Road, Santhosapuram, Chennai-600 073.

Ph: 044 22780303 | [www.newprinceshribhavani.com](http://www.newprinceshribhavani.com)



## **6. UNIVERSAL HUMAN VALUE CELL (UHV)**

According to University Grants Commission guidelines stipulated, our college has established universal human cell. The cell functions to look into the grievances lodged by any student. Students may approach the cell to record their grievances regarding society services, health services, and other services. Any form of discontent or dissatisfaction on the part of the students can be informed to the cell.

The Grievance cell also looks into matters of human graveness. Anyone with a genuine grievance may approach the Co-coordinator or member of the Student's Grievance cell. The cell then redresses the grievances promptly and judiciously. As a result of this mechanism, the institute has pleasant ambient atmosphere and good work culture with in-built goodwill and mutual understanding among the students.

### **Committee Members:**

As per UGC guidelines, all complaints shall first be addressed to Universal Human Committee (UHV) and its composition is as follows:



# NEW PRINCE SHRI BHAVANI COLLEGE OF ENGINEERING AND TECHNOLOGY



Affiliated to Anna University | Approved by AICTE | Accredited by NAAC  
Tambaram - Velachery Main Road, Santhosapuram, Chennai-600 073.

Ph: 044 22780303 | [www.newprinceshribhavani.com](http://www.newprinceshribhavani.com)

SL. NO	NAME	DESIGNATION	ROLE
1	Dr.T.Saravanan	Principal	Chairman
2	Dr.P.K.Chidambaram	Professor & Head - MECH	Co-ordinator
3	Mr.A.Sekar	Associate Professor/CIVIL	Member
4	Dr.S.Vidhya	Assistant Professor / IT	Member
5	Ms.D.R.Anita sofia liz	Assistant Professor / CSE	Member

## Responsibilities/Functions:

- Help the students to understand the values that guide their own daily lives.
- Development of students in physical, mental, emotional and spiritual aspect.
- Help the students to make up decisions based on moral principles.
- Involved in academic, social and community activities as a volunteer (through the institution and/or privately).
- To develop good manners, responsibilities of good citizen and develop respect for the dignity of individual and society.





# NEW PRINCE SHRI BHAVANI COLLEGE OF ENGINEERING AND TECHNOLOGY



Affiliated to Anna University | Approved by AICTE | Accredited by NAAC  
Tambaram - Velachery Main Road, Santhosapuram, Chennai-600 073.  
Ph: 044 22780303 | [www.newprinceshribhavani.com](http://www.newprinceshribhavani.com)

**Students are Involved in academic, social and community activities as a volunteer**





# NEW PRINCE SHRI BHAVANI COLLEGE OF ENGINEERING AND TECHNOLOGY

Affiliated to Anna University | Approved by AICTE | Accredited by NAAC  
Tambaram - Velachery Main Road, Santhosapuram, Chennai-600 073.  
Ph: 044 22780303 | [www.newprinceshribhavani.com](http://www.newprinceshribhavani.com)



**Development of students in physical, mental, emotional and spiritual aspect.**





# NEW PRINCE SHRI BHAVANI COLLEGE OF ENGINEERING AND TECHNOLOGY



Affiliated to Anna University | Approved by AICTE | Accredited by NAAC  
Tambaram - Velachery Main Road, Santhosapuram, Chennai-600 073.

Ph: 044 22780303 | [www.newprinceshribhavani.com](http://www.newprinceshribhavani.com)



## 7. LIBRARY COMMITTEE

Library committee is headed by the principal and the inputs from the members of the committee is considered for procuring books, journals, magazines and also fulfil all the needs of the students to access the library. The committee will organize a meeting at the beginning of every academic year to ensure proper maintenance and effective functioning.

### Committee Members:

SL. NO	NAME	DESIGNATION	POSITION
1	Dr.T.Saravanan	Principal	Chairman
2	Prof.A.Swaminathan	Director	Member
3	Ms.M.Roothilin Evan	Librarian	Member
4	Mr.D.Gowrishankar	Assistant Professor/ECE	Member
5.	Ms.S.Jeyanthi	Assistant Professor/IT	Member
6.	Ms.J.Malathi	Assistant Professor/CSE	Member
7.	Ms.M.Devi	Assistant Professor/EEE	Member



# NEW PRINCE SHRI BHAVANI COLLEGE OF ENGINEERING AND TECHNOLOGY

Affiliated to Anna University | Approved by AICTE | Accredited by NAAC  
Tambaram - Velachery Main Road, Santhosapuram, Chennai-600 073.

Ph: 044 22780303 | [www.newprinceshribhavani.com](http://www.newprinceshribhavani.com)



## Responsibilities/Functions:

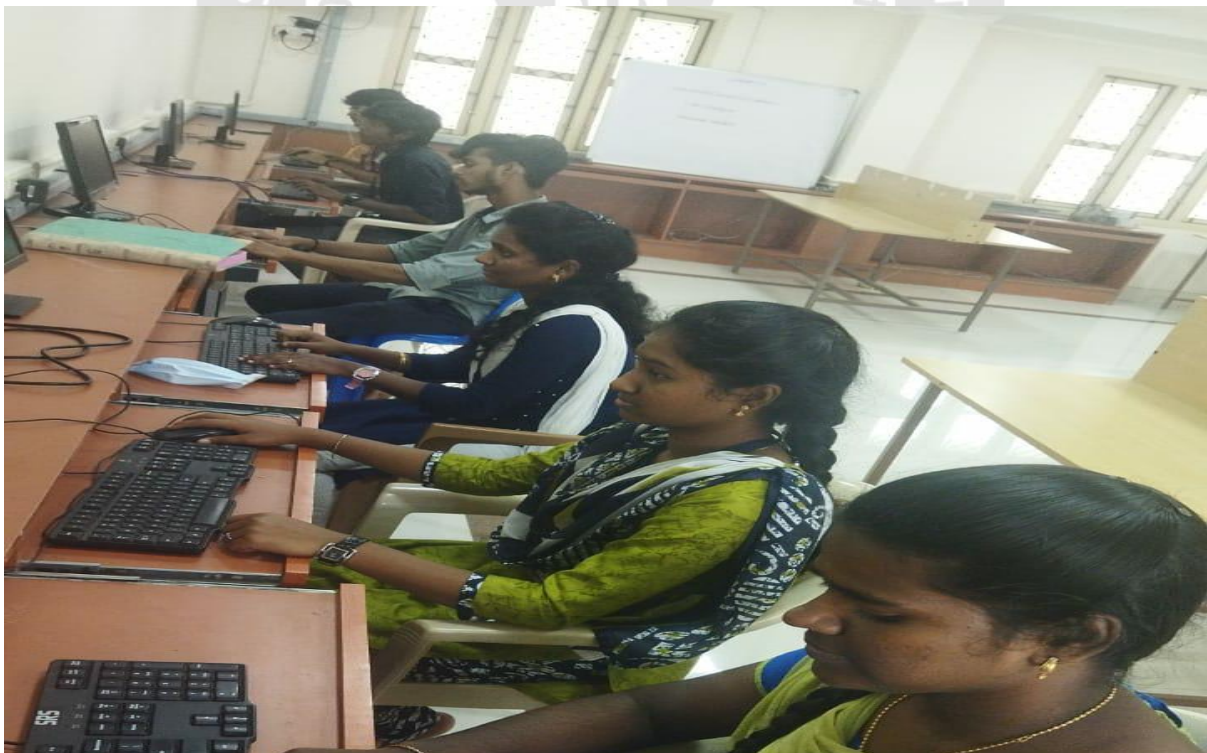
- Plan and propose the annual budget for library.
- To ensure proper resources are available and upgrade it based on the requirements of faculties and students every year.
- Motivating the students to enroll for NPTEL courses.
- To update Library information management system.
- Maintain as a hub of learning and maintain discipline.





# NEW PRINCE SHRI BHAVANI COLLEGE OF ENGINEERING AND TECHNOLOGY

Affiliated to Anna University | Approved by AICTE | Accredited by NAAC  
Tambaram - Velachery Main Road, Santhosapuram, Chennai-600 073.





# NEW PRINCE SHRI BHAVANI COLLEGE OF ENGINEERING AND TECHNOLOGY

Affiliated to Anna University | Approved by AICTE | Accredited by NAAC  
Tambaram - Velachery Main Road, Santhosapuram, Chennai-600 073.



Ph: 044 22780303 | [www.newprinceshribhavani.com](http://www.newprinceshribhavani.com)

## 8. Sports Committee

NPSBCET shall provide excellence in organizational infrastructure, facilities and coaching to enable students from all backgrounds to reach their full potential through sports performance. The committee builds a vibrant and integrated sports community that will give students the opportunity to develop their leadership and management skills.

### Committee Members:

SL. NO	NAME	DESIGNATION	POSITION
1	Prof.A.Swaminathan	Director	Chairman
2	Mr. Manikandan	Physical Director	Member
3	Mr.N.Shankar	Assistant Professor/CIVIL	Member
4	Mr.S.Santhosh	Assistant Professor/CSE	Member
5	Mr.K.Kumara Saravanan	Assistant Professor/EEE	Member
6	Dr.M.Prakash	Assistant Professor/MECH	Member
7	Mr.D.Gowrishankar	Assistant Professor/ECE	Member
8	Ms.S.Karthika	Assistant Professor/IT	Member

### Responsibilities/Functions:

- To run a consistent and sustainable sports development programs providing students with opportunities to participate in recreational and competitive sporting activities.
- To bring up talented sports men and women through the highest standard of sports coaching, competition and mentorship and develop them physically, mentally and spiritually.
- To plan and conduct in-house training and competitions.
- Ensure proper use of gym.
- Propose the annual budget for purchase of sports items and maintenance.



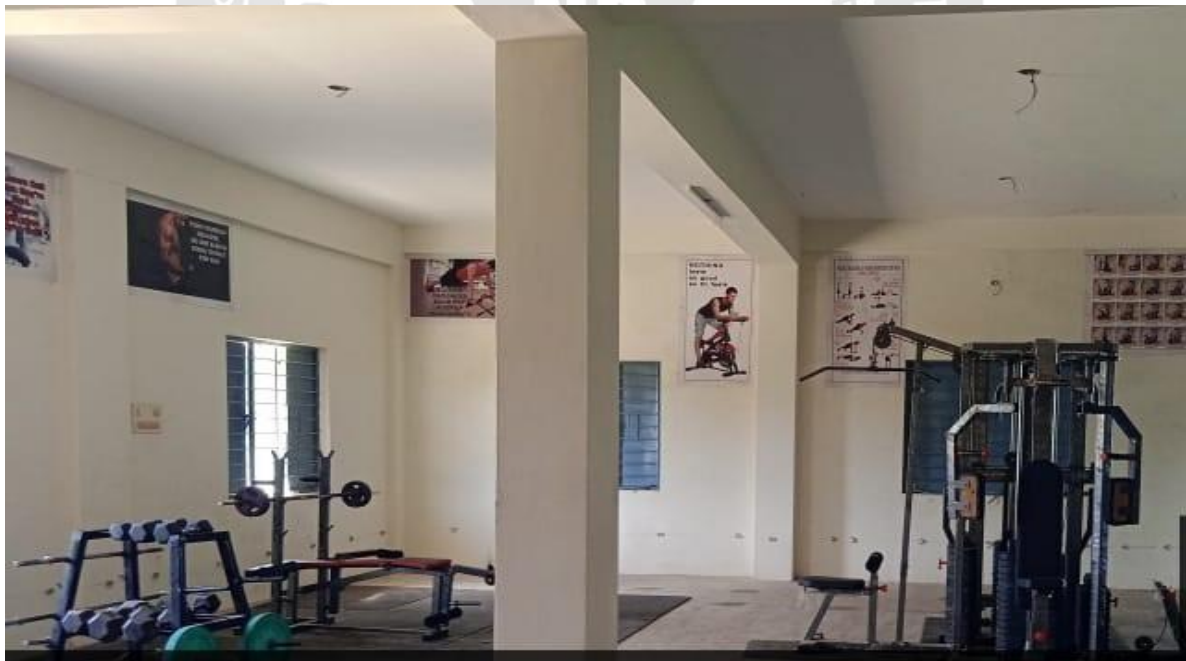
# NEW PRINCE SHRI BHAVANI COLLEGE OF ENGINEERING AND TECHNOLOGY

Affiliated to Anna University | Approved by AICTE | Accredited by NAAC  
Tambaram - Velachery Main Road, Santhosapuram, Chennai-600 073.

Ph: 044 22780303 | [www.newprinceshribhavani.com](http://www.newprinceshribhavani.com)



## Gym Facilities





# NEW PRINCE SHRI BHAVANI COLLEGE OF ENGINEERING AND TECHNOLOGY

Affiliated to Anna University | Approved by AICTE | Accredited by NAAC  
Tambaram - Velachery Main Road, Santhosapuram, Chennai-600 073.  
Ph: 044 22780303 | [www.newprinceshribhavani.com](http://www.newprinceshribhavani.com)



## In-Door Games



## Out Door Games (Basket Ball Court)







# NEW PRINCE SHRI BHAVANI COLLEGE OF ENGINEERING AND TECHNOLOGY

Affiliated to Anna University | Approved by AICTE | Accredited by NAAC  
Tambaram - Velachery Main Road, Santhosapuram, Chennai-600 073.  
Ph: 044 22780303 | [www.newprinceshribhavani.com](http://www.newprinceshribhavani.com)



## 9. Transport Committee

The main aim of transport committee is to provide transport facilities to students and faculties from various places, which helps both rural and urban students and faculties to reach the college in correct time with safety standards.

### Committee Members:

SL. NO	NAME	DESIGNATION	POSITION
1	Prof.A.Swaminathan	Director	Chairman
2	Mr.K.Sarathy	Assistant Professor/EEE	Member
3	Mr. P.Manikandan	Physical Director	Member



# NEW PRINCE SHRI BHAVANI COLLEGE OF ENGINEERING AND TECHNOLOGY

Affiliated to Anna University | Approved by AICTE | Accredited by NAAC  
Tambaram - Velachery Main Road, Santhosapuram, Chennai-600 073.

Ph: 044 22780303 | [www.newprinceshribhavani.com](http://www.newprinceshribhavani.com)



## Responsibilities/Functions:

- Co-ordinate the Educational Trips and field visits conducted by different Departments / Associations.
- Provide transportation service to students, teachers and the Departments after proper assessment of the requisition and ensure optimum use of transportation facility.
- Coordinate various routes regularly with the assistance of route-in-charges.
- Inspect the condition of the buses and report for necessary action on a continuous basis.
- Periodically checking the validity and expiration of documents of the transportation services used by the Institute.
- Substitution in the event of a driver's absence, a suitable alternative must be arranged immediately.
- Ensure that the drivers wear only the prescribed uniform during their duty hours.
- Ensure that the drivers allow the students to travel only if they have valid transportation pass issued by the college.
- Ensure that the drivers conduct with students should be with a decent and pleasing manner.
- Transport In charge should ensure that all buses are having proper permissions.





# NEW PRINCE SHRI BHAVANI COLLEGE OF ENGINEERING AND TECHNOLOGY

Affiliated to Anna University | Approved by AICTE | Accredited by NAAC  
Tambaram - Velachery Main Road, Santhosapuram, Chennai-600 073.



Ph: 044 22780303 | [www.newprinceshribhavani.com](http://www.newprinceshribhavani.com)

## 10. Hostel Committee

The committee is headed by Principal and ensures a healthy academic environment for all students staying in the hostel. The committee monitors various aspects with regard to hostel food, accommodation, Maintenance and discipline in the hostel.

### Committee Members:

SL. NO	NAME	DESIGNATION	POSITION
1.	Dr.T.Saravanan	Principal	Chairman
2.	Prof.A.Swaminathan	Director	Member
3.	Mr.K.Sarathy	Assistant Professor/EEE	Member
4.	Mr.N.Arun Balaji	Assistant Professor/ECE	Member

### Responsibilities/Functions:

- Monitor proper infrastructure facilities regarding hostel.
- Scheduling the Study Hours, maintain academic Discipline, and monitor the absenteeism of the hostellers.
- Address the complaints from students and appropriate actions are taken.
- Counsel the behaviour of students and monitor the academic performance of the students.
- Visit the mess/canteen monthly.

## 11. Women Empowerment Cell:

The College has established a Women Empowerment Cell in the college campus to empower girl students, to enhance understanding of issues related to women and to make the college campus a safe place for girl students. With a view to taking up women's issues and problems, the cell aims at creating awareness of their rights and duties. It also



# NEW PRINCE SHRI BHAVANI COLLEGE OF ENGINEERING AND TECHNOLOGY



Affiliated to Anna University | Approved by AICTE | Accredited by NAAC  
Tambaram - Velachery Main Road, Santhosapuram, Chennai-600 073.

Ph: 044 22780303 | [www.newprinceshribhavani.com](http://www.newprinceshribhavani.com)

provides a platform for women to share their experiences and views regarding their status in the society and to suggest ways to improve and empower themselves. Aiming at intellectual and social upliftment of the female students, the cell stands for facilitating women's empowerment through games, seminars, awareness programmes and other welfare activities. Strengthening communities by empowering women and elevating their position in terms of capacity building.

## Committee Members:

SL. NO	NAME	DESIGNATION	POSITION
1.	Dr.G.Durgadevi	Head/ECE	President
2.	Dr. P. Sridevi Ponmalar	Head/CSE	Secretary
3.	Ms.S.Subathra	Assistant Professor/Civil	Member
4.	Dr. M.Sindhuja	Assistant Professor/IT	Member
5.	Dr. S. Sivagami	Associate Professor / S&H	Member

## Responsibilities/Functions:

- To redress the balance between men and women.
- To increase both the quantity and quality of women in higher education.
- To develop for women a range of training strategies and materials that will be replicable or may be adapted for use in the institution.
- To sensitise the students on the need for empowerment of women.
- To help them understand their strengths and potential.
- To conduct programmes for women in Higher Education with a long-term for enhancing the role of women in higher education.
- To help them to identify inherent talents and develop skills.



# NEW PRINCE SHRI BHAVANI COLLEGE OF ENGINEERING AND TECHNOLOGY

Affiliated to Anna University | Approved by AICTE | Accredited by NAAC  
Tambaram - Velachery Main Road, Santhosapuram, Chennai-600 073.  
Ph: 044 22780303 | [www.newprinceshribhavani.com](http://www.newprinceshribhavani.com)



## Committee Members Meeting:



## 12. Anti Ragging Committee

### Committee Members:

SL. NO	NAME	DESIGNATION	POSITION
1.	Dr.T.Saravanan	Principal	Chair-person
2.	Mr . Naveentha Krishnan	AP/MECH	Convener
3.	Dr. M.Sindhuja	AP/IT	Member
4.	Ms .S.Subathra	AP/Civil	Member
5.	Mrs .T.Annalakshmi	AP/ECE	Member
6.	Dr. S. Sivagami	AP/ S&H	Member
7.	Mr. S.Santhose	AP/ CSE	Member
8.	Mrs .M./Devi	AP/EEE	Member



# NEW PRINCE SHRI BHAVANI COLLEGE OF ENGINEERING AND TECHNOLOGY

Affiliated to Anna University | Approved by AICTE | Accredited by NAAC  
Tambaram - Velachery Main Road, Santhosapuram, Chennai-600 073.



Ph: 044 22780303 | [www.newprinceshribhavani.com](http://www.newprinceshribhavani.com)

1. To root out ragging in all its forms from the College by preventing its occurrence by following the provisions of these regulations and punishing those who indulge in the same despite of `prohibition and prevention`.
2. It shall consider the recommendations of the Anti-ragging Squad and take appropriate decisions, including spelling out suitable punishments to those found guilty.
3. The Anti-ragging Squad will have visit, oversight and patrolling functions. It shall be kept mobile, alert and active at all times and shall be empowered to inspect places of potential ragging and make surprise raids on hostels, classrooms, and buses.
4. Undertaking by the student and Undertaking by parent/guardian has to be submitted.

## Anti Ragging Free Campus





# NEW PRINCE SHRI BHAVANI COLLEGE OF ENGINEERING AND TECHNOLOGY

Affiliated to Anna University | Approved by AICTE | Accredited by NAAC  
Tambaram - Velachery Main Road, Santhosapuram, Chennai-600 073.

Ph: 044 22780303 | [www.newprinceshribhavani.com](http://www.newprinceshribhavani.com)



### 13. Rotaract Club Committee

#### Committee Members:

Sl. No.	NAME	POSITION
1.	D.R. Anita Sofia Liz	CO-ORDINATOR
2.	Mr. R. Ruban Daniel	PRESIDENT
3.	Mr. P. Nitish	SECRETARY
4.	Mr. A. Premkumar	TREASURER
5.	Mr. K. Thangamari Kumar	MEMBER
6.	Mr. A. Gokul	MEMBER
7.	Mr. D. Prameen	MEMBER
8.	Mr. C.Surya	MEMBER



# NEW PRINCE SHRI BHAVANI COLLEGE OF ENGINEERING AND TECHNOLOGY

Affiliated to Anna University | Approved by AICTE | Accredited by NAAC  
Tambaram - Velachery Main Road, Santhosapuram, Chennai-600 073.

Ph: 044 22780303 | [www.newprinceshribhavani.com](http://www.newprinceshribhavani.com)



9.	Mr. Pathi Subbarao	MEMBER
10.	Mr. D. Edwin Joseph Raj	MEMBER
11.	Mr. Manikandan	MEMBER

The Rotaract Club members of New Prince Shri Bhavani College of Engineering and Technology conducted the AADUKALAM







# NEW PRINCE SHRI BHAVANI COLLEGE OF ENGINEERING AND TECHNOLOGY

Affiliated to Anna University | Approved by AICTE | Accredited by NAAC  
Tambaram - Velachery Main Road, Santhosapuram, Chennai-600 073.

Ph: 044 22780303 | [www.newprinceshribhavani.com](http://www.newprinceshribhavani.com)



## 14. Cultural Committee

### Committee Members:

Sl. No.	NAME	POSITION
1.	Ms.K.Srividya	CO-ORDINATOR
2.	Ms. B. Deepshika	PRESIDENT
3.	Ms. V.Suganya	SECRETARY
4.	Ms.S. Jenifer	TREASURER
5.	Ms. P.Kavipriya	MEMBER
6.	Ms. N. Nandhini	MEMBER
7.	Mr,Parthiban	MEMBER
8.	Mr, P. Vignesh Kumar	MEMBER
9.	Mr. G. Shiyam Kumar	MEMBER
10.	Mr. J. Barath Kumar	MEMBER
11.	Mr.S.Prince Samuel	MEMBER





# NEW PRINCE SHRI BHAVANI COLLEGE OF ENGINEERING AND TECHNOLOGY



Affiliated to Anna University | Approved by AICTE | Accredited by NAAC  
Tambaram - Velachery Main Road, Santhosapuram, Chennai-600 073.  
Ph: 044 22780303 | [www.newprinceshribhavani.com](http://www.newprinceshribhavani.com)





# NEW PRINCE SHRI BHAVANI COLLEGE OF ENGINEERING AND TECHNOLOGY

Affiliated to Anna University | Approved by AICTE | Accredited by NAAC  
Tambaram - Velachery Main Road, Santhosapuram, Chennai-600 073.

Ph: 044 22780303 | www.newprinceshribhavani.com



## Participative Management:



### NEW PRINCE SHRI BHAVANI COLLEGE OF ENGINEERING AND TECHNOLOGY

#### CIRCULAR

Subject :  
**Graduation day and Alumni meet 2017**

Circular Number :  
**NPSB/Principal Off./07/17/004**

Target Audience :  
**All Students and Staff members**

Date of Issue :  
**14 - July - 2017**

In view of the **5<sup>th</sup> Graduation day** to be held in our college premises for the 2012-16 batch students, **Tomorrow (15-07-2017) – Saturday** is declared as a **Holiday** for all **B.E./B.Tech/M.E./MCA students**.

The **5<sup>th</sup> alumni meet** will be held in our college premises tomorrow (15-07-2017) at 1.30 PM. All Staff members are instructed to attend the same.

  
**PRINCIPAL**

Copy to :

1. Vice Chairman
2. Director
3. All H.O.D.s
4. To be read in all classes



# NEW PRINCE SHRI BHAVANI COLLEGE OF ENGINEERING AND TECHNOLOGY





# NEW PRINCE SHRI BHAVANI COLLEGE OF ENGINEERING AND TECHNOLOGY





# NEW PRINCE SHRI BHAVANI COLLEGE OF ENGINEERING AND TECHNOLOGY



Affiliated to Anna University | Approved by AICTE | Accredited by NAAC  
Tambaram - Velachery Main Road, Santhosapuram, Chennai-600 073.  
Ph: 044 22780303 | [www.newprinceshribhavani.com](http://www.newprinceshribhavani.com)

## Women's Day Celebration





# NEW PRINCE SHRI BHAVANI COLLEGE OF ENGINEERING AND TECHNOLOGY



Affiliated to Anna University | Approved by AICTE | Accredited by NAAC  
Tambaram - Velachery Main Road, Santhosapuram, Chennai-600 073.  
Ph: 044 22780303 | [www.newprinceshribhavani.com](http://www.newprinceshribhavani.com)

## Placement and Training Cell





# NEW PRINCE SHRI BHAVANI COLLEGE OF ENGINEERING AND TECHNOLOGY

Affiliated to Anna University | Approved by AICTE | Accredited by NAAC  
Tambaram - Velachery Main Road, Santhosapuram, Chennai-600 073.

Ph: 044 22780303 | [www.newprinceshribhavani.com](http://www.newprinceshribhavani.com)



## NPSBCET Internal Hackton

# NEW PRINCE

Shri Bhavani College Of Engineering And Technology

AFFILIATED TO ANNA UNIVERSITY | APPROVED BY AICTE | ACCREDITED BY NAAC

Velachery Main Road, Santhosapuram, Chennai - 600 073 | Ph - 22780303 | [www.newprinceshribhavani.com](http://www.newprinceshribhavani.com)

Grand Opportunity for All Creative Engineers

Innovative Ideas Welcome for  
NEW PRINCE HACKATHON 2020

Team Registration

1st Round

2nd Round

Submission Dates

18.12.2019

28.12.2019

08.01.2020

SMART INDIA HACKATHON 2020

### Rules & Guidelines

- ▶ Teams of 3rd semester & below category of all A / B / level can participate as female candidates.
- ▶ The teams can come up with their own ideas post after the problem statements and submit them to the nominated faculty in the department.
- ▶ Problem Statements should be taken from Smart India Hackathon website [www.sih.gov.in](http://www.sih.gov.in).
- ▶ Problem statements may be taken from any topics, but will be limited to as specified in SIH website or any other any ongoing SIHs.
- ▶ The team name should be unique and MUST NOT contain the name of the Institute / organization.
- ▶ The teams should submit the following details:  
Team name  
Choose problem statement  
idea title  
idea description  
idea PPT format available in [www.newprinceshribhavani.com/newprincehackathon2020](http://www.newprinceshribhavani.com/newprincehackathon2020)  
Name of team leader and the rest 2 team members  
Contact of team leader and the rest 3 team members  
Mobile no. of all the team members along with the team leader.

### How should the students form a team?

- ▶ All team members should be from same college, no inter college teams are allowed. However, students from different divisions of the same college/institute are encouraged to form a team.
- ▶ Each team should mandatorily comprise of 3 members including the team leader.
- ▶ Each team must have AT LEAST ONE MEMBER TEAM MEMBER.
- ▶ As the influence of the students in digital product development revolution, majority of the team members should be well-versed with programming skills. For the hardware section, we encourage multidisciplinary teams with a mix of students from a good mix of CSE / IT / MCA / IT / EEE / ECE / EIE.
- ▶ Both software and hardware students must use open source software and hardware design must do on their own.

### What's the Selection Criteria?

- ▶ Post long submission process, the ideas will be evaluated by Internal and External experts.
- ▶ Evaluation criteria will include novelty of the idea, creativity, clarity and details in the presentation format, feasibility, innovativeness, sustainability, scope of impact, user experience and potential for future work progression.

### General Information

- ▶ Each department can submit the number of problem statements as follows:

CSE & IT	Min. 10 / Max. each
ECE	Min. 10 / Max. 5 / HW
EE	Min. 5 / Max. 5 / HW
Mech	Min. 10 / HW
CIVIL	Min. 5 / HW
AI&ML	Min. 5 / HW
- ▶ PPT, WORDS & VIDEO IN [www.newprinceshribhavani.com/newprincehackathon2020](http://www.newprinceshribhavani.com/newprincehackathon2020) (Students can add more slides (max 15) depends on the problem statements)

### General Information Regarding the Final

- ▶ If a team is selected for the final hackathon, members will need to show case the complete implementation of their project.
- ▶ Shortlisted teams must bear the total expense on their own. No funding will be provided from the college.
- ▶ NPSBHAVANI | Tambaram & Velachery | will shortlist and award to participants in Smart India Hackathon 2020.

More details visit : [www.newprinceshribhavani.com/newprincehackathon2020](http://www.newprinceshribhavani.com/newprincehackathon2020)





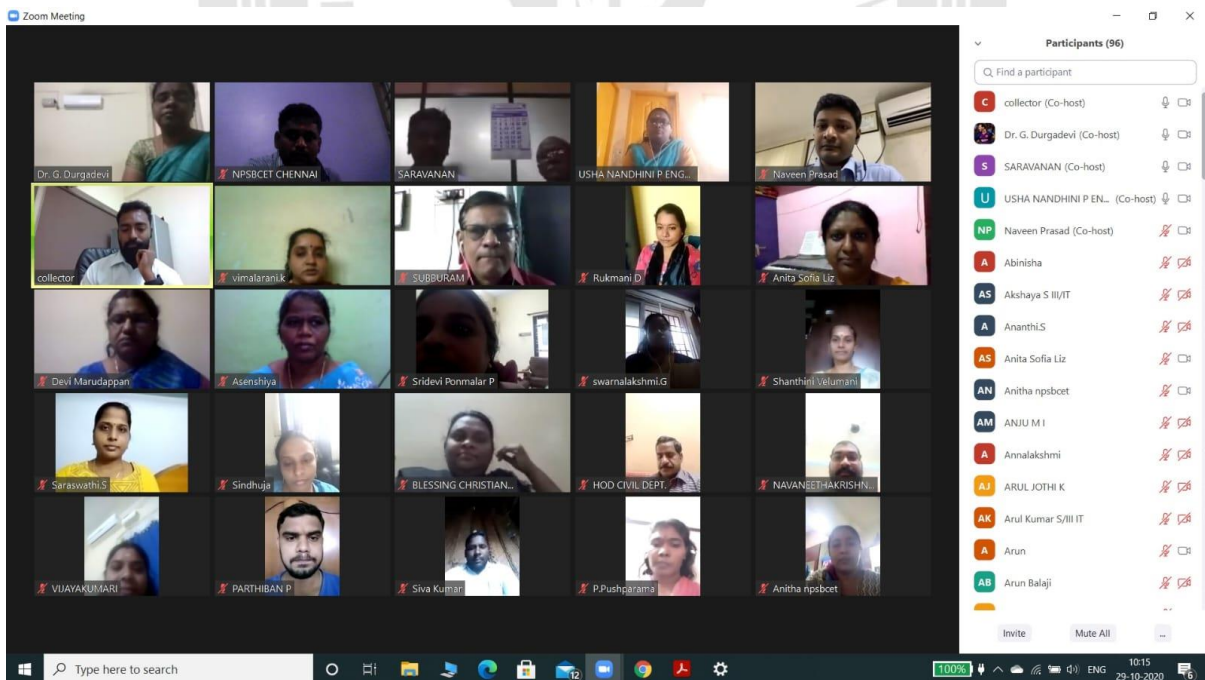
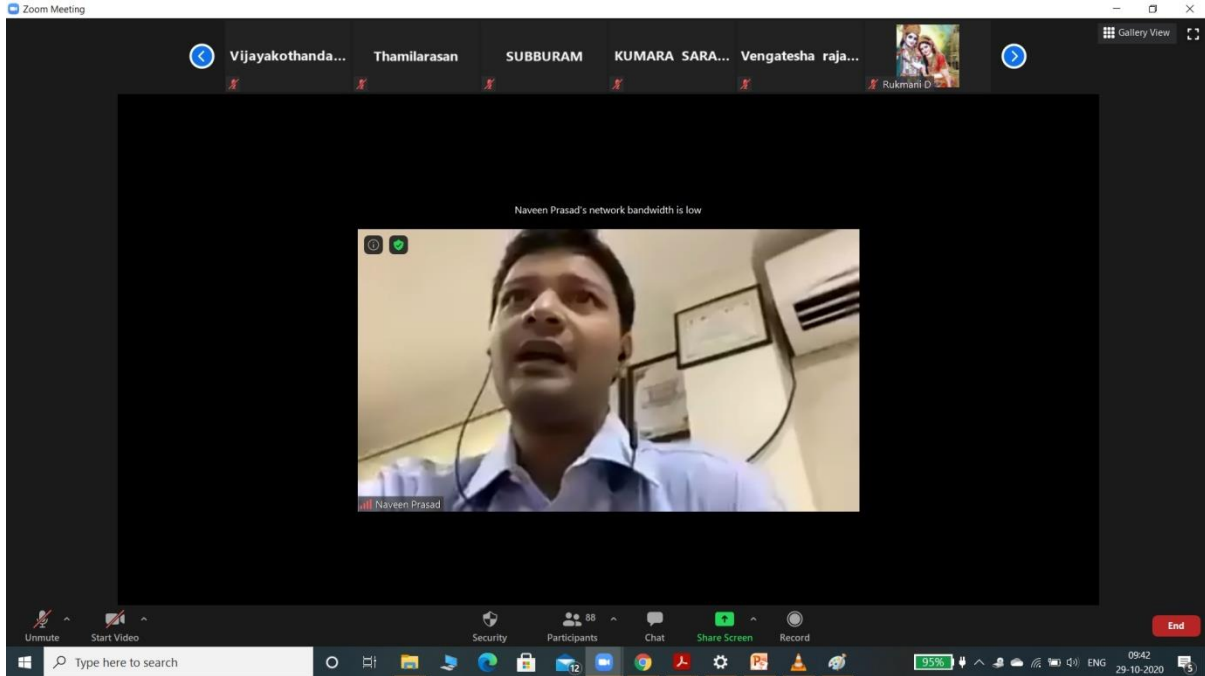
# NEW PRINCE SHRI BHAVANI COLLEGE OF ENGINEERING AND TECHNOLOGY

Affiliated to Anna University | Approved by AICTE | Accredited by NAAC  
Tambaram - Velachery Main Road, Santhosapuram, Chennai-600 073.

Ph: 044 22780303 | [www.newprinceshribhavani.com](http://www.newprinceshribhavani.com)



## National Level Virtual Technical Symposium





# NEW PRINCE SHRI BHAVANI COLLEGE OF ENGINEERING AND TECHNOLOGY



Affiliated to Anna University | Approved by AICTE | Accredited by NAAC  
Tambaram - Velachery Main Road, Santhosapuram, Chennai-600 073.  
Ph: 044 22780303 | [www.newprinceshribhavani.com](http://www.newprinceshribhavani.com)

## Motivated the Students in Cultural Fest





# NEW PRINCE SHRI BHAVANI COLLEGE OF ENGINEERING AND TECHNOLOGY



Affiliated to Anna University | Approved by AICTE | Accredited by NAAC  
Tambaram - Velachery Main Road, Santhosapuram, Chennai-600 073.  
Ph: 044 22780303 | [www.newprinceshribhavani.com](http://www.newprinceshribhavani.com)

## Motivated the Students in Sports Activities





# NEW PRINCE SHRI BHAVANI COLLEGE OF ENGINEERING AND TECHNOLOGY



Affiliated to Anna University | Approved by AICTE | Accredited by NAAC  
Tambaram - Velachery Main Road, Santhosapuram, Chennai-600 073.  
Ph: 044 22780303 | [www.newprinceshribhavani.com](http://www.newprinceshribhavani.com)



## Science Day Celebration





# NEW PRINCE SHRI BHAVANI COLLEGE OF ENGINEERING AND TECHNOLOGY

Affiliated to Anna University | Approved by AICTE | Accredited by NAAC  
Tambaram - Velachery Main Road, Santhosapuram, Chennai-600 073.

Ph: 044 22780303 | www.newprinceshribhavani.com



## Roles and Responsibility of Faculty Members

Sl. No.	Name Of The Full-Time Teacher	Responsibility Of The Teacher
1	Dr.P.Sridevi Ponmalar/CSE/Professor Head	Academic Advisory Committee, Women Empowerment And Grievance Cell Member
2	Dr.R.Ahila/CSE/Professor	Dept.IIC Coordinator
3	Dr.P.B.Edwin Prabhakar/CSE/Professor	Anti - Ragging committee member- Chairman
4	Mrs.D.R.Anita Sofia Liz/CSE/Assistant Professor	Students grievance redressal committee Chairman
5	Mr. S. Santhosh	Sports Committee
6	Mrs.P.Kavitha/CSE/Assistant Professor	Anti Sexual Harassment cell- member, Placement Coordinator
7	Mrs.Santhy.G.B/CSE/Assistant Professor	Alumni Member
8	Mrs.Malathi.J/CSE/Assistant Professor	Timetable coordinator, Admission cell coordinator
9	Mrs.Saranya.V/CSE/Assistant Professor	Exam cell Coordinator
10	Dr S Parthasarathy/EEE/Associate Professor	Academic advisory committee, NIRF coordinator
11	Mrs. K Shanthini/EEE/Associate Professor	Timetable coordinator
12	Mr. K Sarathy/EEE/Assistant Professor	Admission cell Coordinator
13	Mrs. M Devi/EEE/Associate Professor	IIC Coordinator, Sports Committee, Alumni coordinator, Anti Sexual Harassment cell-member, Placement Committee member
14	Mrs. P Thenmozhi/EEE/Assistant Professor	Exam cell coordinator
15	Mr. K Kumarasaravanan/EEE/Assistant Professor	Admission cell Coordinator
16	Mr. A. Sekar /CIVIL/Assistant Professor	Students grievance redressal committee member
17	Mrs. G. Swarnalakshmi /CIVIL/Assistant Professor	Alumni committee - Member
18	Ms. S. Subathra /CIVIL/Assistant Professor	Timetable Coordinator
19	Dr.T.Saravanan/ECE/Professor	IQAC Chairman, IIC president
20	Dr.G.Durgadevi/ECE/Associate Professor	IQAC Coordinator, Women Empowerment and Grievance Cell- President, Anti Sexual Harassment cell-member, Student grievance and Redressal cell member , Students grievance redressal committee member



# NEW PRINCE SHRI BHAVANI COLLEGE OF ENGINEERING AND TECHNOLOGY



Affiliated to Anna University | Approved by AICTE | Accredited by NAAC  
Tambaram - Velachery Main Road, Santhosapuram, Chennai-600 073.

Ph: 044 22780303 | [www.newprinceshribhavani.com](http://www.newprinceshribhavani.com)

21	Ms.V.Hemamalini/ECE/Assistant Professor	Alumni coordinator, Timetable Committee member
22	Mr.D.Gowri Shankar/ECE/Assistant Professor	IIC Convener, Sports Committee, ARIIA Co-ordinator
23	Ms.M.I.Anju/ECE/Assistant Professor	Exam cell committee member, Women Empowerment and Grievance Cell -coordinator
24	Mr.P.Parthiban/ECE/Assistant Professor	Placement Committee member, Anti-Ragging committee cell, Student Grievance and Redrassal cell convener, IIC - Social media co-ordinator
25	Ms.S.Ananthi/ECE/Assistant Professor	Women Empowerment and Grievance Cell member
26	Ms.T.Annalakshmi/ECE/Assistant Professor	Anti - Ragging committee member
27	Mr.N.Arunbalaji/ECE/Assistant Professor	Admission cell
28	Dr.S.Subburam/IT/Professor	Academic Advisor Committee, IIC Coordinator Committee member
29	Dr.G.Amirthayogum/IT/Associate Professor	Anti - Ragging committee member
30	Dr.N.Kalyana Sundaram/IT/Assistant Professor	Examcell Committee Member
31	Mrs.M.Sindhuja/IT/Assistant Professor	Women Empowerment Committee Member, IPR activity coordinator
32	Mrs.K.Blessing Christiana/IT/Assistant Professor	Timetable Coorinator,Admission cell committee member
33	Mrs.S.Karthika/IT/Assistant Professor	Alumni committee Member
34	Mrs.P.Bhuvanewari/IT/Assistant Professor	Sexual Arrestment committee member
35	Mrs.S.Saraswathi/IT/Assistant Professor	Students grievance redressal committee member
36	Mr.K.Manikandan/IT/Assistant Professor	Placement and Sports Committee Member
37	Dr.S.Sivagami/S&H/Professor	Anti - Ragging committee member, IIC - Internship co ordinator
38	Ms.K Sridvidhya/S&H/Assistant professor	Admission cell
39	Ms.C.R. Eldin Jeeva/S&H/Assistant professor	Coordinator of Ramanujan Math Club , Students grievance redressal committee member, Women empowerment and grievance cell member , Anti sexual Harassment Cell - member
40	Ms.G. Geetharamani / S&H Assistant professor	In charge of Cultural Activities
41	Ms.M Subha/S&H/Assistant professor	First year girls sports co ordinator



# NEW PRINCE SHRI BHAVANI COLLEGE OF ENGINEERING AND TECHNOLOGY



Affiliated to Anna University | Approved by AICTE | Accredited by NAAC  
Tambaram - Velachery Main Road, Santhosapuram, Chennai-600 073.

Ph: 044 22780303 | [www.newprinceshribhavani.com](http://www.newprinceshribhavani.com)

42	Dr. P.K. Chidambaram/MECH/Professor	Students grievance redressal committee member, Anti sexual Harassment Cell - member, IIC Invocation activity co ordinator
43	MR. A. Madhan kumar /MECH/ Assistant Professor	IIC-Start up Activity co ordinator
44	MR. D. Navaneetha Krishnan /MECH/Assistant Professor	Anti - Ragging committee member
45	Dr C Meenakshi/MCA/Professor	IIC Coordinator
46	Ms S Jeyanthi/MCA/Assistant Professor	Placement Coordinator, Women Empowerment and Grievance Cell member
47	Ms C P Nijitha Mahalakshmi/MCA/Assistant Professor	Sports Coordinator, Anti Ragging Committee
48	Ms N Vanitha/MCA/Assistant Professor	Alumni Coordinator
49	Ms K Thenmozhi/MCA/Assistant Professor	Timetable Coordinator
50	Ms C Bhuvaneshwari/MCA/Assistant Professor	Admission cell