



# New Prince Shri Bhavani

## College of Engineering and Technology



Tambaram-Velachery Main Road, Santhosapuram, Chennai-600 073

f www.facebook.com/npsbceatofficial | t twitter.com/newprinceengg | i www.instagram.com/newprinceengg\_official

### Department of Electronics and Communication Engineering

#### Teacher Feedback on Syllabus Academic year: 2020-2021(ODD SEM) Analysis Report

S.No	Statements	Percentage of Response			
		Excellent	Very good	Good	Poor
1.	Syllabus is needed based	73	15	12	0
2.	Course objectives are clear and appropriate to the program.	67	21	12	0
3.	The text books/reference books are well suited to the courses.	61	30	9	0
4.	Provision to update curriculum time to time	55	30	9	6
5.	The curriculum and syllabus are well organized and suitable to the program	67	18	15	0
6.	The system followed by the university for the design and development of curriculum is effective.	61	24	9	6
7.	How do you rate the distribution contact hours among the course components.	58	33	9	0
8.	The curriculum has a good balance between theory and practical.	46	30	24	0
9.	How do rate the effectiveness offered in your program for the technological advancements.	64	21	12	3
10.	Importance and relevance of the course for the industrial needs.	61	24	12	3
11.	Whether the syllabus can be covered within the adequate time?	73	18	9	0
12.	Proficiency level of students in the prerequisites.	52	42	6	0
13.	Contribution of course content to design thinking and critical analysis.	61	24	15	0
14.	Is the timely coverage of curriculum possible in mentioned number of hours?	64	24	12	0
15.	The curriculum/courses of this subjects increased my knowledge and perspective subjects in the area.	61	27	12	0



PRINCIPAL  
NEW PRINCE SHRI BHAVANI COLLEGE OF  
ENGINEERING & TECHNOLOGY  
GOWRIVAKKAM, CHENNAI 600 073



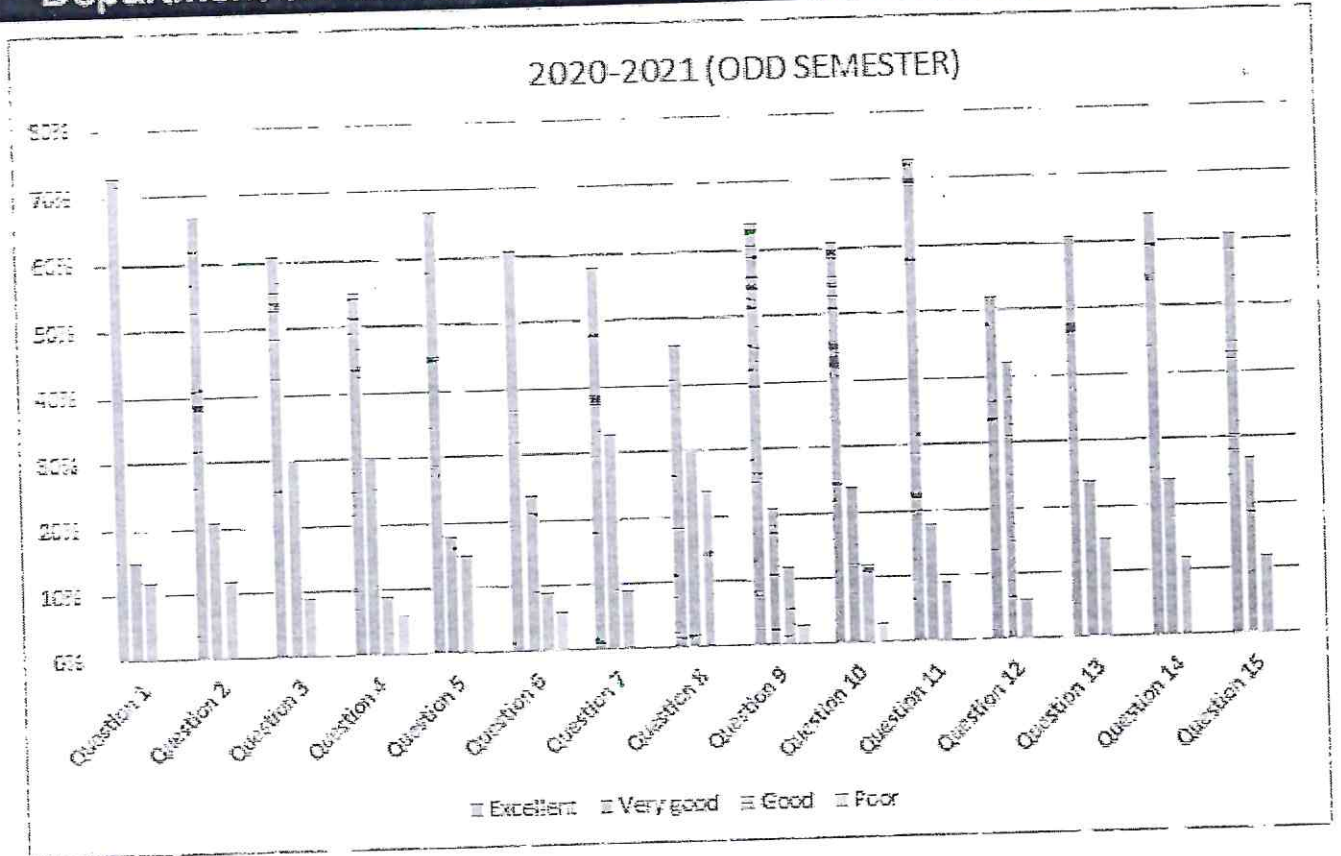
# New Prince Shri Bhavani College of Engineering and Technology



Tamparam-Velachery Main Road, Santhosapuram, Chennai-600 073

www.facebook.com/newprinceofficial | twitter.com/newprinceengg | www.instagram.com/newprinceengg\_official

## Department of Electronics and Communication Engineering



### Inference:

Inclusion of HDL, Splicing techniques, Architecture of ARM in syllabus are suggested.

### Action Suggested:

The suggested topics can be provided to students through Seminars, workshop, Guest lectures.

HOD

Head of the Department

Dept. of Electronics & Communication Engg.,  
New Prince Shri Bhavani College of Engg. & Tech.,  
Tandakur Main Road, Gowrivakkam, Chennai - 73



PRINCIPAL  
NEW PRINCE SHRI BHAVANI COLLEGE OF  
ENGINEERING & TECHNOLOGY  
GOWRIVAKKAM, CHENNAI - 600 073

PRINCIPAL

NEW PRINCE SHRI BHAVANI COLLEGE OF  
ENGINEERING & TECHNOLOGY  
GOWRIVAKKAM, CHENNAI - 600 073



# New Prince Shri Bhavani

## College of Engineering and Technology



Tambaram-Velachery Main Road, Santhosapuram, Chennai-600 073

f www.facebook.com/npsbeatofficial | t twitter.com/newprinceengg | @ www.instagram.com/newprinceengg\_official

### Department of Electronics and Communication Engineering

#### Teacher Feedback on Syllabus Academic year: 2020-2021(EVEN SEM) Analysis Report

S.No	Statements	Percentage of Response			
		Excellent	Very good	Good	Poor
1.	Syllabus is needed based	80	17	3	0
2.	Course objectives are clear and appropriate to the program.	62	31	7	0
3.	The text books/reference books are well suited to the courses.	65	21	14	0
4.	Provision to update curriculum time to time	58	21	21	0
5.	The curriculum and syllabus are well organized and suitable to the program	73	17	10	0
6.	The system followed by the university for the design and development of curriculum is effective.	62	31	7	0
7.	How do you rate the distribution contact hours among the course components?	79	7	14	0
8.	The curriculum has a good balance between theory and practical.	66	24	10	0
9.	How do you rate the effectiveness offered in your program for technological advancements?	58	28	14	0
10.	Importance and relevance of the course for the industrial needs.	63	21	3	3
11.	Whether the syllabus can be covered within the adequate time?	76	3	21	0
12.	Proficiency level of students in the prerequisites.	62	14	24	0
13.	Contribution of course content to design thinking and critical analysis.	73	10	14	3
14.	Is timely coverage of the curriculum possible in the mentioned number of hours?	79	14	7	0
15.	The curriculum/courses of these subjects increased my knowledge and perspective on subjects in the area.	76	14	10	0

PRINCIPAL

NEW PRINCE SHRI BHAVANI COLLEGE OF  
ENGINEERING & TECHNOLOGY  
GOWRIVAKKAM, CHENNAI 600 073





# New Prince Shri Bhavani College of Engineering and Technology

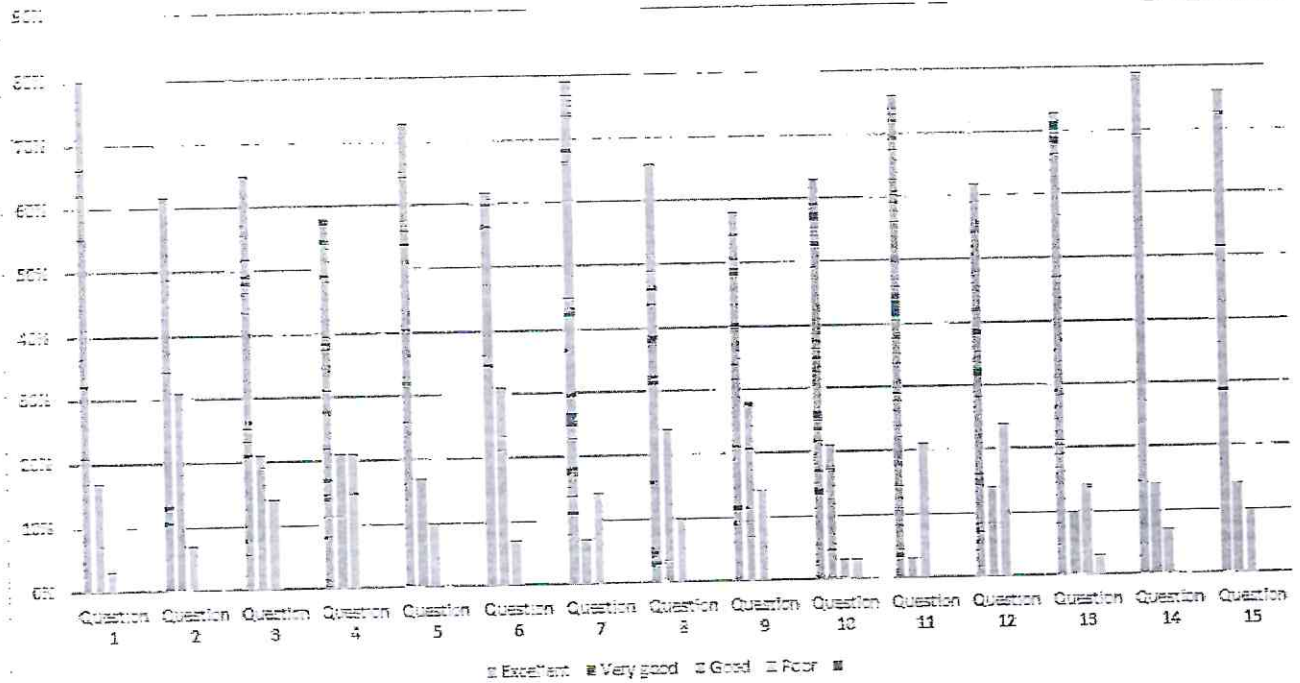


Tambaram-Velachery Main Road, Santhosapuram, Chennai-600 073

f www.facebook.com/mpsbceofficial | t twitter.com/newprinceengg | @ www.instagram.com/newprinceengg\_official

## Department of Electronics and Communication Engineering

2020-2021(EVEN SEM)



### Inference:

Activities related to environmental science, extra lab experiments application oriented wise for Linear integrated circuits lab are suggested.

### Action Suggested:

Club activities can be planned for Environmental sustainability motivating the students to do mini projects(application of circuits).

**HOD**  
Head of the Department  
Dept. of Electronics & Communication Engg.,  
New Prince Shri Bhavani College of Engg. & Tech.,  
Rengaiwasal Main Road, Gowrivakkam, Chennai - 73



**PRINCIPAL**  
NEW PRINCE SHRI BHAVANI COLLEGE OF  
ENGINEERING & TECHNOLOGY  
GOWRIVAKKAM, CHENNAI - 600 073

**PRINCIPAL**  
NEW PRINCE SHRI BHAVANI COLLEGE OF  
ENGINEERING & TECHNOLOGY  
GOWRIVAKKAM, CHENNAI - 600 073



# New Prince Shri Bhavani

## College of Engineering and Technology



Tambaram-Velachery Main Road, Santhosapuram, Chennai-600 073

f [www.facebook.com/npsbceofficial](https://www.facebook.com/npsbceofficial) | t [twitter.com/newprinceengg](https://twitter.com/newprinceengg) | @ [www.instagram.com/newprinceengg\\_official](https://www.instagram.com/newprinceengg_official)

### Department of Electrical and Electronics Engineering

#### Teacher Feedback on Syllabus Academic year: 2020-2021 Analysis Report

S.No	Statements	Percentage of Response			
		Excellent	Very good	Good	Poor
1.	Syllabus is needed based	47.82609	39.13043	8.695652	0
2.	Course objectives are clear and appropriate to the program.	56.52174	21.73913	17.3913	0
3.	The text books/reference books are well suited to the courses.	34.78261	47.82609	13.04348	0
4.	Provision to update curriculum time to time	30.43478	39.13043	21.73913	0
5.	The curriculum and syllabus are well organized and suitable to the program	43.47826	39.13043	13.04348	0
6.	The system followed by the university for the design and development of curriculum is effective.	39.13043	39.13043	17.3913	0
7.	How do you rate the distribution contact hours among the course components.	34.78261	52.17391	8.695652	0
8.	The curriculum has a good balance between theory and practical.	26.08696	39.13043	30.43478	0
9.	How do rate the effectiveness offered in your program for the technological advancements.	43.47826	39.13043	13.04348	0
10.	Importance and relevance of the course for the industrial needs.	26.08696	30.43478	39.13043	0
11.	Whether the syllabus can be covered within the adequate time?	39.13043	43.47826	13.04348	0
12.	Proficiency level of students in the prerequisites.	34.78261	34.78261	26.08696	0
13.	Contribution of course content to design thinking and critical analysis.	39.13043	52.17391	4.347826	0
14.	Is the timely coverage of curriculum possible in mentioned number of hours?	34.78261	34.78261	26.08696	0
15.	The curriculum/courses of this subjects increased my knowledge and perspective subjects in the area.	30.43478	56.52174	13.695652	0

PRINCIPAL

NEW PRINCE SHRI BHAVANI COLLEGE OF  
ENGINEERING & TECHNOLOGY  
GOWRIAKKAM, CHENNAI - 600 073





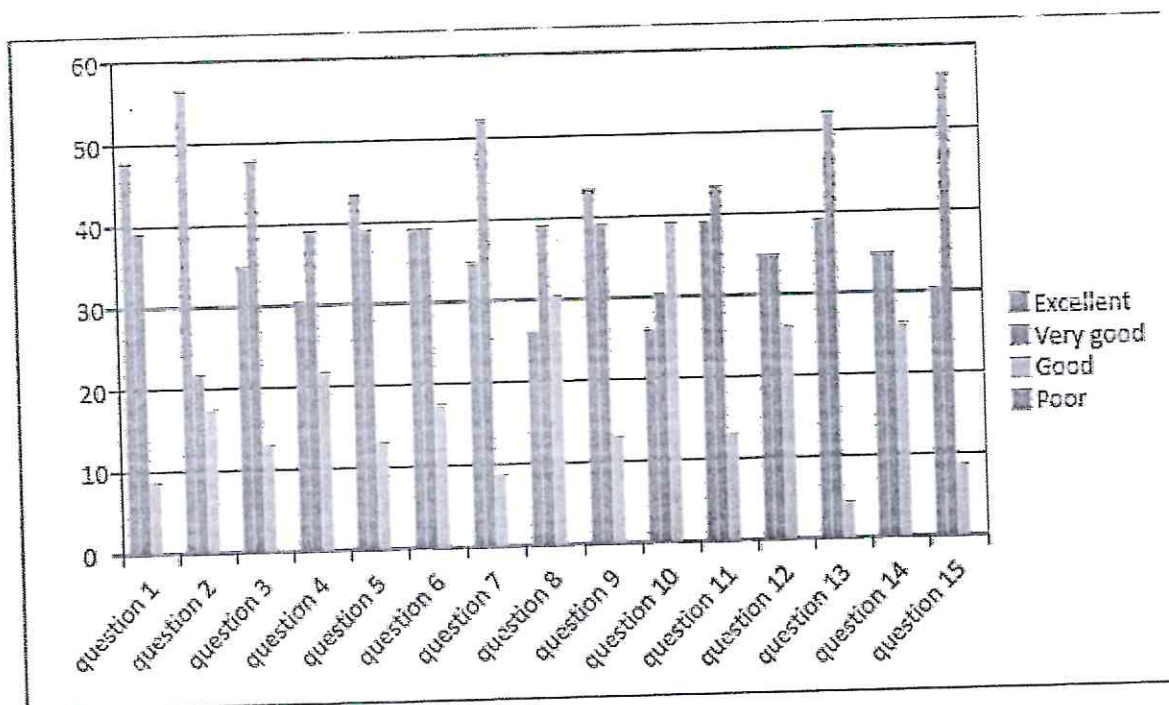
# New Prince Shri Bhavani College of Engineering and Technology



Tambaram-Velachery Main Road, Santhosapuram, Chennai-600 073

f www.facebook.com/npsbceofficial t twitter.com/newprinceengg @ www.instagram.com/newprinceengg\_official

## Department of Electrical and Electronics Engineering



### Inference:

For few courses, the contact hours are not sufficient to conduct tutorials.

The theory and practical courses are not well balanced in curriculum.

Need some courses based on Industrial needs.

### Action Suggested:

To conduct special classes for problem oriented papers.

To conduct workshop/skill development programme to improvise practical knowledge.

To organize Faculty development Program based on Industrial applications.

*Jamun*  
HOD



*[Signature]*  
PRINCIPAL  
NEW PRINCE SHRI BHAVANI COLLEGE OF  
ENGINEERING & TECHNOLOGY  
GOWRIVAKKAM, CHENNAI 600 073

*[Signature]*  
PRINCIPAL  
NEW PRINCE SHRI BHAVANI COLLEGE OF  
ENGINEERING & TECHNOLOGY  
GOWRIVAKKAM, CHENNAI 600 073

Head of the Department  
Dept. of Electrical & Electronics Engg.,  
No. Prince Shri Bhavani College of Engg. & Tech.  
Vengalvada Main Road, Gowrivaakkam, Chennai 600 073



# New Prince Shri Bhavani

## College of Engineering and Technology



Tambaram-Velachery Main Road, Santhosapuram, Chennai-600 073.

f www.facebook.com/apsbceofficial | t twitter.com/newprinceengg | @ www.instagram.com/newprinceengg\_official

### Department of Electrical and Electronics Engineering

#### Teacher Feedback on Syllabus Academic year: 2020-2021 Analysis Report

S.No	Statements	Percentage of Response			
		Excellent	Very good	Good	Poor
1.	Syllabus is needed based	52	48	0	0
2.	Course objectives are clear and appropriate to the program.	36	36	12	0
3.	The text books/reference books are well suited to the courses.	48	48	0	0
4.	Provision to update curriculum time to time	40	40	12	0
5.	The curriculum and syllabus are well organized and suitable to the program	48	48	16	0
6.	The system followed by the university for the design and development of curriculum is effective.	36	36	4	0
7.	How do you rate the distribution contact hours among the course components.	52	52	20	0
8.	The curriculum has a good balance between theory and practical.	48	48	24	0
9.	How do rate the effectiveness offered in your program for the technological advancements.	40	40	12	0
10.	Importance and relevance of the course for the industrial needs.	20	30	30	20
11.	Whether the syllabus can be covered within the adequate time?	40	36	20	0
12.	Proficiency level of students in the prerequisites.	36	32	8	0
13.	Contribution of course content to design thinking and critical analysis.	44	40	20	0
14.	Is the timely coverage of curriculum possible in mentioned number of hours?	44	44	8	0
15.	The curriculum/courses of this subjects increased my knowledge and perspective subjects in the area.	56	56	8	0

*56*  
PRINCIPAL

NEW PRINCE SHRI BHAVANI COLLEGE OF  
ENGINEERING & TECHNOLOGY  
GOWRIVAKKAM, CHENNAI - 600 073





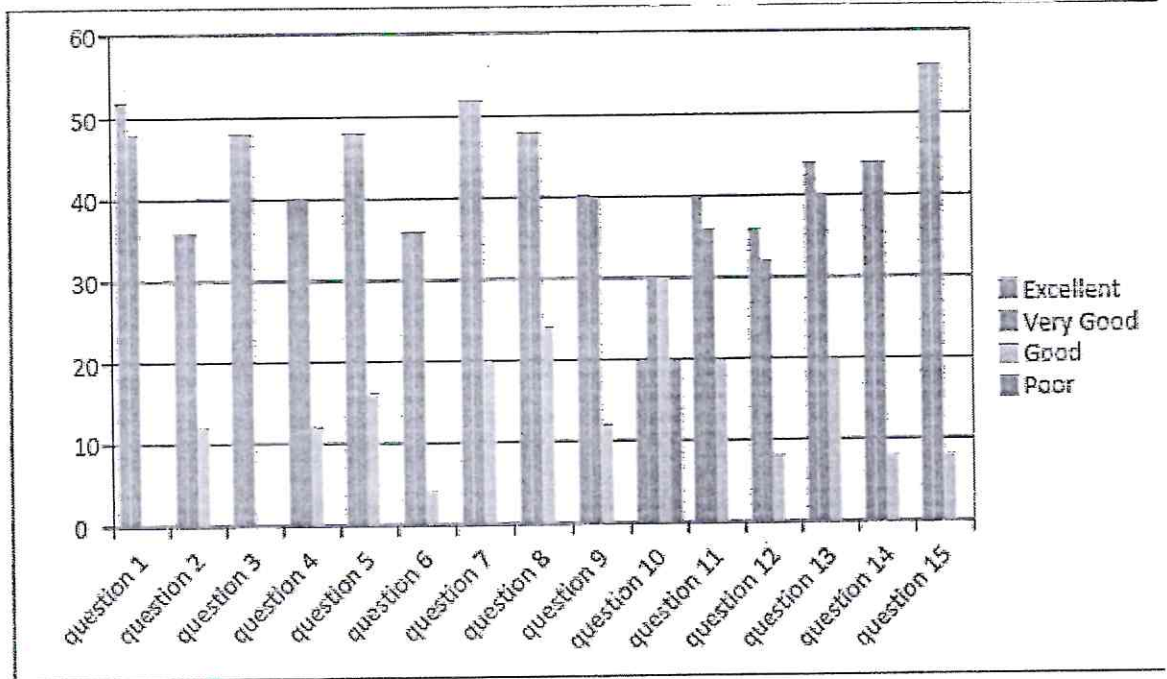
# New Prince Shri Bhavani College of Engineering and Technology



Tambaram-Velachery Main Road, Santhosapuram, Chennai-600 073

f [www.facebook.com/npsbceofficial](https://www.facebook.com/npsbceofficial) | t [twitter.com/newprinceengg](https://twitter.com/newprinceengg) | @ [www.instagram.com/newprinceengg\\_official](https://www.instagram.com/newprinceengg_official)

## Department of Electrical and Electronics Engineering



### Inference:

The theory and practical courses are not well balanced in curriculum.

Need some courses based on Industrial needs.

### Action Suggested:

To conduct workshop/skill development programme to improve practical knowledge.

To organize Faculty development Program based on Industrial applications.

*[Signature]*  
HOD



**Head of the Department**  
Dept. of Electrical & Electronics Engg.,  
Ne. Prince Shri Bhavani College of Engg. & Tech.,  
Vengalivasal Main Road, Gowravakkam, Chennai 75.

*[Signature]*  
PRINCIPAL

NEW PRINCE SHRI BHAVANI COLLEGE OF  
ENGINEERING & TECHNOLOGY  
GOWRAVAKKAM, CHENNAI - 600 073

*[Signature]*  
PRINCIPAL  
NEW PRINCE SHRI BHAVANI COLLEGE OF  
ENGINEERING & TECHNOLOGY  
GOWRAVAKKAM, CHENNAI 600 073





# New Prince Shri Bhavani

## College of Engineering and Technology



Tambaram-Velachery Main Road, Santhosapuram, Chennai-600 073

f www.facebook.com/newprincecollegeofengg | t twitter.com/newprincecollegeofengg | www.instagram.com/newprincecollegeofengg

### Department of Computer Science and Engineering

#### Teacher Feedback on Syllabus Academic year: 2020-2021(ODD SEM) Analysis Report

S.No	Statements	Percentage of Response			
		Excellent	Very good	Good	Poor
1.	Syllabus is needed based	28	20	28	24
2.	Course objectives are clear and appropriate to the program.	24	36	12	28
3.	The text books/reference books are well suited to the courses.	24	28	20	28
4.	Provision to update curriculum time to time	8	28	32	32
5.	The curriculum and syllabus are well organized and suitable to the program	36	12	24	28
6.	The system followed by the university for the design and development of curriculum is effective.	32	28	20	20
7.	How do you rate the distribution contact hours among the course components.	20	20	28	32
8.	The curriculum has a good balance between theory and practical.	36	24	20	20
9.	How do rate the effectiveness offered in your program for the technological advancements.	28	16	36	20
10.	Importance and relevance of the course for the industrial needs.	16	40	28	16
11.	Whether the syllabus can be covered within the adequate time?	32	16	28	24
12.	Proficiency level of students in the prerequisites.	24	16	36	24
13.	Contribution of course content to design thinking and critical analysis.	16	28	32	24
14.	Is the timely coverage of curriculum possible in mentioned number of hours?	20	20	32	28
15.	The curriculum/courses of this subjects increased my knowledge and perspective subjects in the area.	40	16	28	16



  
PRINCIPAL

NEW PRINCE SHRI BHAVANI COLLEGE OF  
ENGINEERING & TECHNOLOGY  
GOWRIVAKKAM, CHENNAI - 600 073



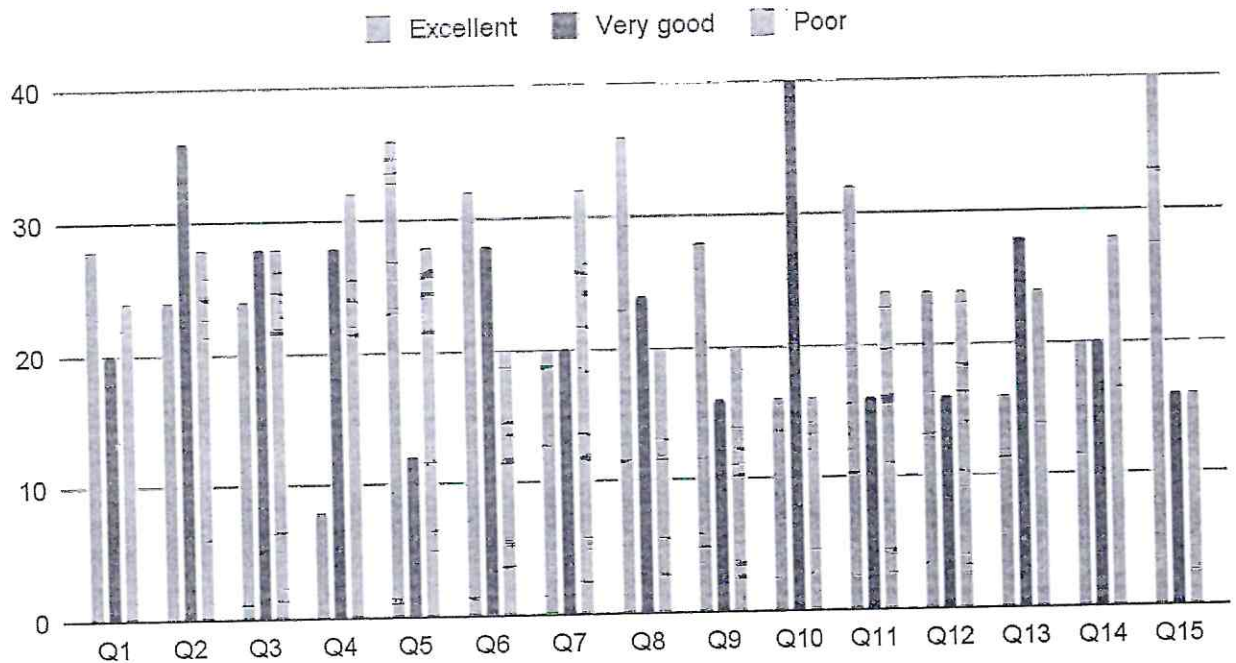
# New Prince Shri Bhavani College of Engineering and Technology



Tamparam-Velachery Main Road, Santhosapuram, Chennai-600 073  
f www.facebook.com/newprincecollegeofficial | t twitter.com/newprincecollege | i www.instagram.com/newprincecollegeofficial

## Department of Computer Science and Engineering

### Staff Feedback Analysis ODD sem



#### Inference:

Inclusion of HDL, Splicing techniques, Architecture of ARM in syllabus are suggested.


#### Action Suggested:


The suggested topics can be provided to students through Seminars, workshop, Guest lectures.

  
HOD



**Head of the Department,**  
Dept. of Computer Science & Engg.,  
New Prince Shri Bhavani College of Engg. & Tech.,  
Vengaiwasal Main Road, Gowrivakkam, Chennai-73.

  
PRINCIPAL  
NEW PRINCE SHRI BHAVANI COLLEGE OF  
ENGINEERING & TECHNOLOGY  
GOWRIVAKKAM, CHENNAI - 600 073

  
PRINCIPAL  
NEW PRINCE SHRI BHAVANI COLLEGE  
ENGINEERING & TECHNOLOGY  
GOWRIVAKKAM, CHENNAI - 600 073



# New Prince Shri Bhavani

## College of Engineering and Technology



Tambaram-Velachery Main Road, Santhosapuram, Chennai-600 073

f www.facebook.com/newprinceofficial | t @newprinceofficial | www.instagram.com/newprinceofficial

### Department of Computer Science and Engineering

#### Teacher Feedback on Syllabus Academic year: 2020-2021(EVEN SEM) Analysis Report

S.No	Statements	Percentage of Response			
		Excellent	Very good	Good	Poor
1.	Syllabus is needed based	19	05	38	38
2.	Course objectives are clear and appropriate to the program.	24	29	29	14
3.	The text books/reference books are well suited to the courses.	24	19	38	14
4.	Provision to update curriculum time to time	24	33	24	14
5.	The curriculum and syllabus are well organized and suitable to the program	14	33	19	29
6.	The system followed by the university for the design and development of curriculum is effective.	14	24	24	33
7.	How do you rate the distribution contact hours among the course components?	5	33	33	24
8.	The curriculum has a good balance between theory and practical.	19	38	29	10
9.	How do you rate the effectiveness offered in your program for technological advancements?	24	10	33	29
10.	Importance and relevance of the course for the industrial needs.	19	48	24	5
11.	Whether the syllabus can be covered within the adequate time?	19	19	24	33
12.	Proficiency level of students in the prerequisites.	19	33	19	24
13.	Contribution of course content to design thinking and critical analysis.	24	24	29	19
14.	Is timely coverage of the curriculum possible in the mentioned number of hours?	14	19	43	19
15.	The curriculum/courses of these subjects increased my knowledge and perspective on subjects in the area.	29	29	24	18



  
NEW PRINCE SHRI BHAVANI COLLEGE OF  
ENGINEERING & TECHNOLOGY  
GOWRIVAKKAM, CHENNAI - 600 073



# New Prince Shri Bhavani College of Engineering and Technology



Tambaram-Velachery Main Road, Santhosapuram, Chennai-600 073

f www.facebook.com/Npsbstofficial | t twitter.com/newprinceengg | www.instagram.com/newprinceengg\_official

## Department of Computer Science and Engineering

### Points scored



### Inference:

Activities related to environmental science, extra lab experiments application oriented wise for Linear integrated circuits lab are suggested.

### Action Suggested:

Club activities can be planned for Environmental sustainability, motivating the students to do mini projects(application of circuits).

*[Signature]*  
HOD



**Head of the Department,**  
Dept. of Computer Science & Engg.,  
New Prince Shri Bhavani College of Engg. & Tech.,  
Vengalivasal Main Road, Gowrivaikam, Chennai.

*[Signature]*  
PRINCIPAL

**NEW PRINCE SHRI BHAVANI COLLEGE OF  
ENGINEERING & TECHNOLOGY  
GOWRIVAKKAM, CHENNAI - 600 073**

*[Signature]*  
PRINCIPAL

**NEW PRINCE SHRI BHAVANI COLLEGE OF  
ENGINEERING & TECHNOLOGY  
GOWRIVAKKAM, CHENNAI - 600 073**



# New Prince Shri Bhavani

## College of Engineering and Technology



Tambaram-Velachery Main Road, Santhosapuram, Chennai-600 073

www.npscet.ac.in | www.facebook.com/npscet | www.twitter.com/npscet | www.youtube.com/npscet

### Department of Information Technology

### Teacher Feedback on Syllabus Academic year: 2020-2021(ODD SEM) Analysis Report

S. No	Statements	Percentage of Response			
		Excellent	Very good	Good	Poor
1.	Syllabus is needed based	62%	29%	9%	0%
2.	Course objectives are clear and appropriate to the program.	62%	32%	6%	0%
3.	The text books/reference books are well suited to the courses.	56%	38%	6%	0%
4.	Provision to update curriculum time to time	53%	32%	15%	0%
5.	The curriculum and syllabus are well organized and suitable to the program	62%	26%	12%	0%
6.	The system followed by the university for the design and development of curriculum is effective.	65%	26%	9%	0%
7.	How do you rate the distribution contact hours among the course components?	68%	21%	12%	0%
8.	The curriculum has a good balance between theory and practical.	59%	26%	12%	0%
9.	How do you rate the effectiveness offered in your program for technological advancements?	68%	26%	6%	0%
10.	Importance and relevance of the course for the industrial needs.	59%	29%	12%	0%
11.	Whether the syllabus can be covered within the adequate time?	53%	32%	15%	0%
12.	Proficiency level of students in the prerequisites.	44%	41%	12%	0%
13.	Contribution of course content to design thinking and critical analysis.	50%	41%	9%	0%
14.	Is timely coverage of the curriculum possible in the mentioned number of hours?	53%	35%	12%	0%
15.	The curriculum/courses of these subjects increased my knowledge and perspective on subjects in the area.	59%	32%	9%	0%

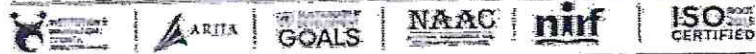


  
PRINCIPAL

NEW PRINCE SHRI BHAVANI COLLEGE OF  
ENGINEERING & TECHNOLOGY  
GOWRIVAKKAM, CHENNAI - 600 073



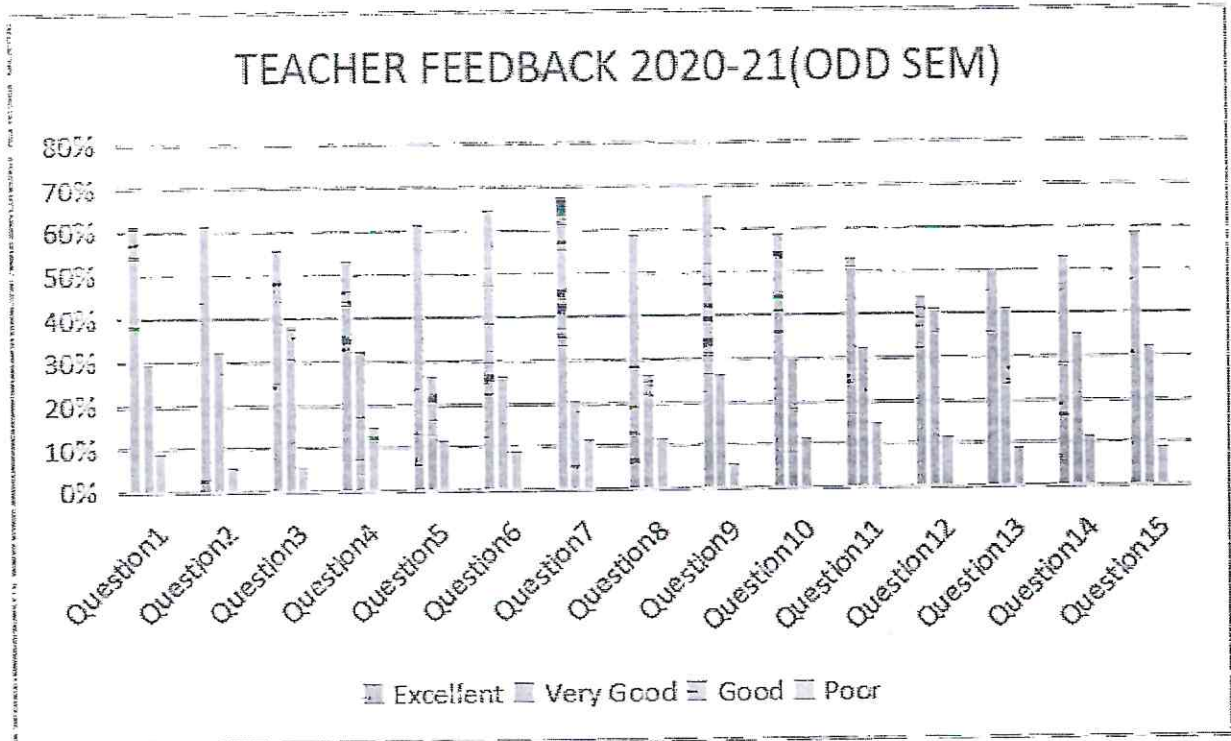
# New Prince Shri Bhavani College of Engineering and Technology



Tambaram-Velachery Main Road, Santhasapuram, Chennai-600 073

www.facebook.com/newprinceengg, www.twitter.com/newprinceengg, www.newprinceengg.com

## Department of Information Technology



### Inference:

Inclusion of FOSS and Cloud Lab and open electives subjects are discussed.

### Action Suggested:

The suggested topics can be provided to students through Seminars, workshop, Guest lectures.

*S. Gu*  
HOD



*Am*  
PRINCIPAL

*Am*  
PRINCIPAL

Head of the Department,  
Dept. of Information Technology,  
New Prince Shri Bhavani College of Engg. & Tech,  
Tambaram-Velachery Main Road, Gowrivakkam, Chennai

NEW PRINCE SHRI BHAVANI COLLEGE OF  
ENGINEERING & TECHNOLOGY  
GOWRIVAKKAM, CHENNAI - 600 073