



# New Prince Shri Bhavani

## College of Engineering and Technology



Tambaram-Velachery Main Road, Santhosapuram, Chennai-600 073

f www.facebook.com/newprinceengg | t twitter.com/newprinceengg | @ www.instagram.com/newprinceengg\_official

### Employers Feedback on Syllabus

Academic Year: 2020 – 2021

### Analysis Report

S.NO	Statements	Percentage of Response		
		HIGH	MEDIUM	LOW
1	Ability to lead a team efficiently.(Q1)	47	53	0
2	Leadership and professional ethics.(Q2)	74	26	0
3	Ability to apply knowledge to provide solutions.(Q3)	84	16	0
4	Proficiency in soft skills.(Q4)	68	32	0
5	Syllabus meets industrial standards.(Q5)	79	21	0
6	Relevancy of the syllabus for employability.(Q6)	74	26	0
7	Syllabus effectiveness developing in innovative thinking.(Q7)	79	21	0
8	Need base on the current syllabus.(Q8)	79	21	0
9	Focus on the syllabus in the development of entrepreneurship.(Q9)	74	26	0
10	Rate of hierarchical order of syllabus in the curriculum.(Q10)	79	21	0



  
PRINCIPAL  
NEW PRINCE SHRI BHAVANI COLLEGE OF  
ENGINEERING & TECHNOLOGY  
GOWD. MUKHAM, CHENNAI - 600 073



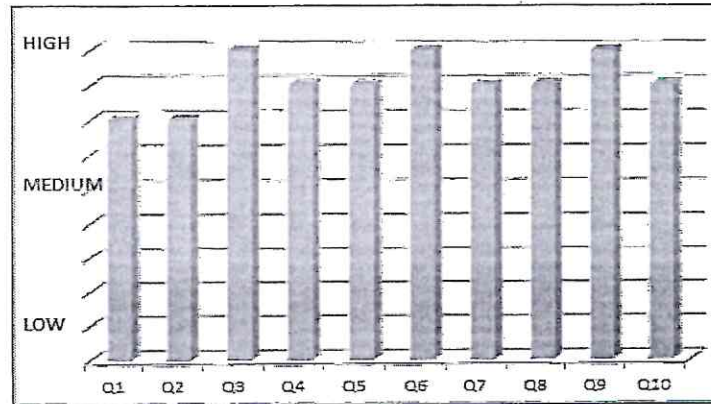
# New Prince Shri Bhavani

## College of Engineering and Technology



Tambaram-Velachery Main Road, Santhosapuram, Chennai-600 073

f [www.facebook.com/newprinceengg](https://www.facebook.com/newprinceengg) | [Twitter.com/newprinceengg](https://twitter.com/newprinceengg) | [www.instagram.com/newprinceengg\\_official](https://www.instagram.com/newprinceengg_official)



### Inference

The distribution of contact hours for soft skill training is not sufficient.  
The team lead training is not implemented and not related to real time skills.

### Action Suggested:

1. To conduct more Soft skill related training.
2. To organize Seminar/Workshop for Improving leadership skill and team work.

Principal



  
PRINCIPAL  
NEW PRINCE SHRI BHAVANI COLLEGE  
ENGINEERING & TECHNOLOGY  
GOWRIVAKKAM, CHENNAI 600 073

  
PRINCIPAL  
NEW PRINCE SHRI BHAVANI COLLEGE OF  
ENGINEERING & TECHNOLOGY  
GOWRIVAKKAM, CHENNAI 600 073