



New Prince Shri Bhavani

College of Engineering and Technology



Tambaram-Velachery Main Road, Santhosapuram, Chennai-600 073

f www.facebook.com/npsbce20official | t twitter.com/newprinceengg | i www.instagram.com/newprinceengg_official

Department of Electronics and Communication Engineering

Alumni Feedback on Syllabus

Batch:2016 -2020

Analysis Report

S.No	Statements	Percentage of Response			
		Excellent	Very good	Good	Poor
1.	Help of graduation to work in teams.	52	36	11	0
2.	How do you rate the learning experience in terms of their relevance to the real life applications	37	43	18	2
3.	Compatibility of syllabus with industry standards.	37	41	20	2
4.	How do you rate the curriculum/ courses content that you have learnt in relation to your current job.	30	48	20	2
5.	Learning values(in terms of skills, concepts, knowledge, analytical ability) in syllabus.	37	45	16	2
6.	Curriculum is sufficient to make you analyze the engineering problems and it's suitable solutions.	44	34	20	2
7.	Whether the engineering program facilitates employability.	37	43	18	2
8.	Whether the practical components under the program is covered sufficiently?	62	10	18	0
9.	Whether the program covers all the courses required for the higher studies and abroad studies?	48	32	18	2
10.	Whether the infrastructure for the program is adequate?	34	50	16	0
11.	Elective courses offered is useful in job.	29	55	14	2
12.	Extra/co-curricular activities through club activities or program you have participated as students were they helpful in overall careers.	28	52	20	0
13.	Research and development opportunities as a UG/PG students.	28	50	20	2
14.	Knowledge gained in practical classes in laboratories	43	39	18	0
15.	Continuously soft skills training for placements.	48	34	18	0



PRINCIPAL

NEW PRINCE SHRI BHAVANI COLLEGE OF
ENGINEERING & TECHNOLOGY
GOWRIVAKKAM, CHENNAI - 600 073



New Prince Shri Bhavani College of Engineering and Technology

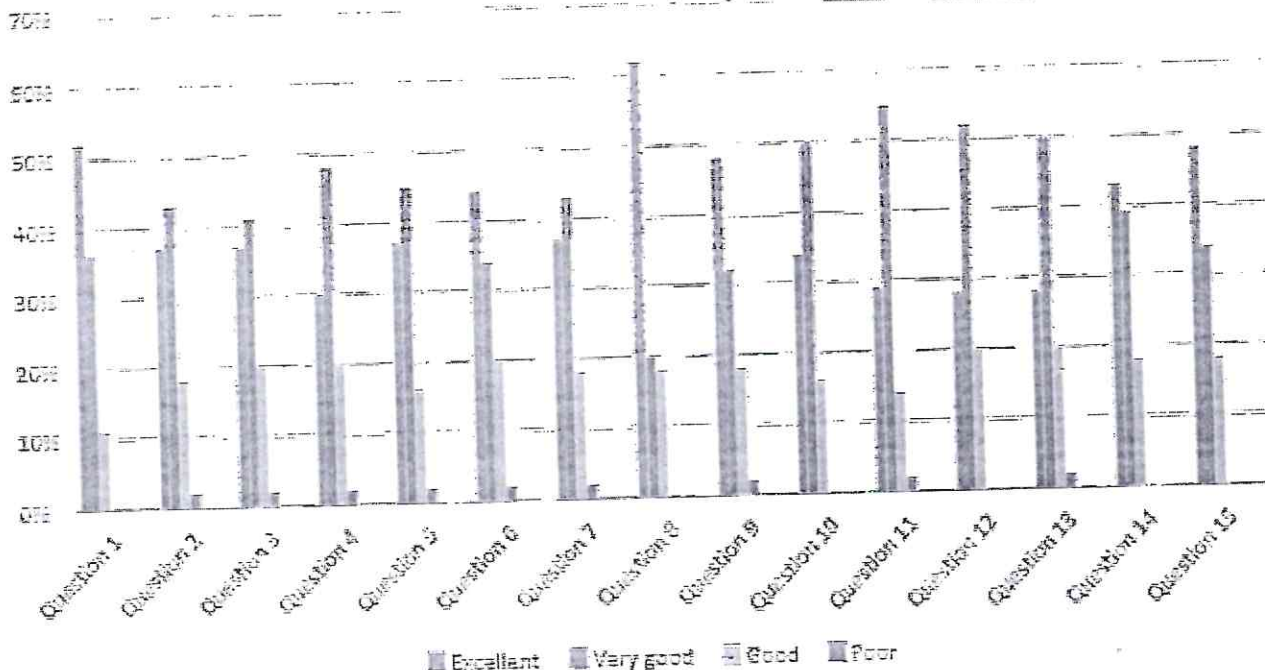


Tambaram-Velachery Main Road, Santhosapuram, Chennai-600 073

f www.facebook.com/npsbceofficial | t twitter.com/newprinceengg | i www.instagram.com/newprinceengg_official

Department of Electronics and Communication Engineering

BATCH 2020



Inference:

Few wanted more sports activities.

Action Suggested:

Sports activities can be improved.

Head of the Department

Dept. of Electronics & Communication Engg.,
New Prince Shri Bhavani College of Engg. & Tech.,
Gowriavasal Main Road, Gowrivakkam, Chennai - 73



NEW PRINCE SHRI BHAVANI COLLEGE OF
ENGINEERING & TECHNOLOGY
GOWRIVAKKAM, CHENNAI - 600 073

PRINCIPAL
NEW PRINCE SHRI BHAVANI COLLEGE OF
ENGINEERING & TECHNOLOGY
GOWRIVAKKAM, CHENNAI - 600 073



New Prince Shri Bhavani

College of Engineering and Technology



Tambaram-Velachery Main Road, Santhosapuram, Chennai-600 073

f www.facebook.com/npsbceofficial | t twitter.com/newprinceengg | i www.instagram.com/newprinceengg_official

Department of Electrical and Electronics Engineering

Alumni Feedback on Syllabus

Batch: 2016-2020

Analysis Report

S.No	Statements	Percentage of Response			
		Excellent	Very good	Good	Poor
1.	Help of graduation to work in teams.	36.36364	36.36364	27.27273	0
2.	How do you rate the learning experience in terms of their relevance to the real life applications	27.27273	54.54545	9.090909	0
3.	Compatibility of syllabus with industry standards.	27.27273	54.54545	18.18182	0
4.	How do you rate the curriculum/ courses content that you have learnt in relation to your current job.	27.27273	36.36364	36.36364	0
5.	Learning values(in terms of skills, concepts, knowledge, analytical ability) in syllabus.	18.18182	45.45455	36.36364	0
6.	Curriculum is sufficient to make you analyze the engineering problems and it's suitable solutions.	18.18182	45.45455	27.27273	0
7.	Whether the engineering program facilitates employability.	27.27273	36.36364	27.27273	0
8.	Whether the practical components under the program is covered sufficiently?	36.36364	36.36364	27.27273	0
9.	Whether the program covers all the courses required for the higher studies and abroad studies?	36.36364	27.27273	36.36364	0
10.	Whether the infrastructure for the program is adequate?	18.18182	45.45455	36.36364	0
11.	Elective courses offered is useful in job.	18.18182	45.45455	27.27273	0
12.	Extra/co-curricular activities through club activities or program you have participated as students were they helpful in overall careers.	9.090909	45.45455	18.18182	0
13.	Research and development opportunities as a UG/PG students.	9.090909	54.54545	9.090909	0
14.	Knowledge gained in practical classes in laboratories	9.090909	63.63636	18.18182	0
15.	Continuously soft skills training for placements.	27.27273	45.45455	18.18182	0



PRINCIPAL
NEW PRINCE SHRI BHAVANI COLLEGE OF
ENGINEERING & TECHNOLOGY
GOWRIVAKKAM, CHENNAI - 600 073



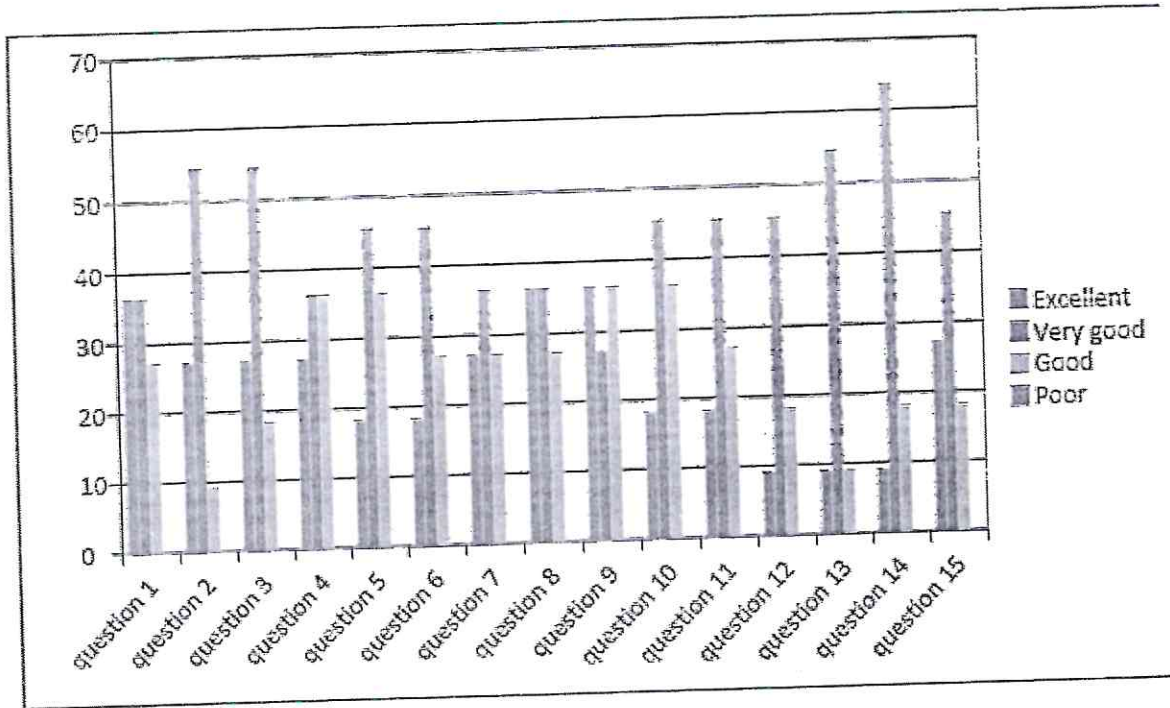
New Prince Shri Bhavani College of Engineering and Technology



Tambaram-Velachery Main Road, Santhosapuram, Chennai-600 073

f www.facebook.com/npsbceofficial | t witter.com/newprinceengg | i www.instagram.com/newprinceengg_official

Department of Electrical and Electronics Engineering



Inference:

There is a gap between course content and present job needs.
Analytical ability and Learning skills are limited with syllabus.

Action Suggested:

- To organize value added courses to bridge the gap between curriculum and company needs.
- To conduct Training programs related to company needs.
- To implement project ideas based on current scenario.

[Signature]
HOD

Head of the Department
Dept. of Electrical & Electronics Engg.,
Ne. Prince Shri Bhavani College of Engg. & Tech.,
Vengalvasal Main Road, Gow rakkam, Chennai. 73.



[Signature]
PRINCIPAL

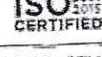
NEW PRINCE SHRI BHAVANI COLLEGE OF
ENGINEERING & TECHNOLOGY
GOWRIVAKKAM, CHENNAI - 600 073

[Signature]
PRINCIPAL
NEW PRINCE SHRI BHAVANI COLLEGE OF
ENGINEERING & TECHNOLOGY
GOWRIVAKKAM, CHENNAI - 600 073



New Prince Shri Bhavani

College of Engineering and Technology



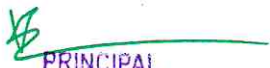
Tambaram-Velachery Main Road, Santhosapuram, Chennai-600 073
f www.facebook.com/newprincecollegeofengg_t | t twitter.com/newprincecollegeofengg | www.halagaram.com/newprincecollegeofengg_official

Department of Computer Science and Engineering

Alumni Feedback on Syllabus Batch:2016 -2020 Analysis Report

S.No	Statements	Percentage of Response			
		Excellent	Very good	Good	Poor
1.	Help of graduation to work in teams.	42	21	25	13
2.	How do you rate the learning experience in terms of their relevance to the real life applications	50	17	17	17
3.	Compatibility of syllabus with industry standards.	21	17	29	33
4.	How do you rate the curriculum/ courses content that you have learnt in relation to your current job.	13	38	29	21
5.	Learning values(in terms of skills, concepts, knowledge, analytical ability) in syllabus.	17	25	21	38
6.	Curriculum is sufficient to make you analyze the engineering problems and it's suitable solutions.	33	13	25	29
7.	Whether the engineering program facilitates employability.	42	17	21	21
8.	Whether the practical components under the program is covered sufficiently?	17	21	42	21
9.	Whether the program covers all the courses required for the higher studies and abroad studies?	29	21	25	25
10.	Whether the infrastructure for the program is adequate?	25	25	17	33
11.	Elective courses offered is useful in job.	46	17	25	13
12.	Extra/co-curricular activities through club activities or program you have participated as students were they helpful in overall careers.	17	21	25	38
13.	Research and development opportunities as a UG/PG students.	25	13	42	21
14.	Knowledge gained in practical classes in laboratories	38	25	17	21
15.	Continuously soft skills training for placements.	29	4	38	29




PRINCIPAL
NEW PRINCE SHRI BHAVANI COLLEGE OF
ENGINEERING & TECHNOLOGY
GOWRIVAKKAM, CHENNAI - 600 073



New Prince Shri Bhavani College of Engineering and Technology

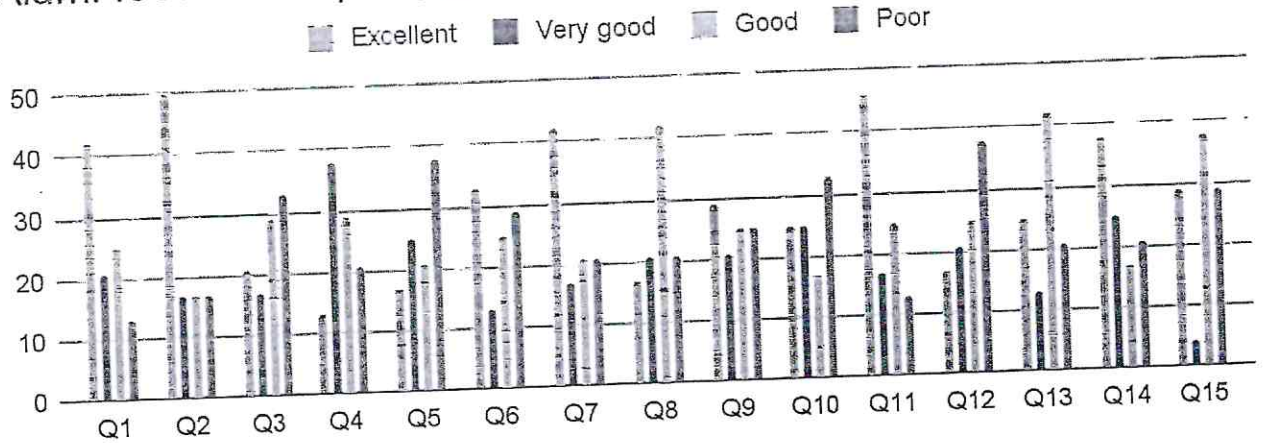
ISO 9001:2015 CERTIFIED

Tambaram-Velachery Main Road, Santhosapuram, Chennai-600 073

www.facebook.com/newprincecollegeofengg | www.instagram.com/newprincecollegeofengg | www.youtube.com/newprincecollegeofengg

Department of Computer Science and Engineering

Alumi feedback report(16-20)



Inference: Need for more extra-curricular activities and Industrial visit.

Action Suggested:

- More co-curricular activities should be done in a more effective way.
- Industrial visit to be arranged.

[Signature]
HOD

Head of the Department,
Dept. of Computer Science & Engg.,
New Prince Shri Bhavani College of Engg. & Tech.,
Vengaiwasal Main Road, Gowrivakkam, Chennai-73.

[Signature]
PRINCIPAL
PRINCIPAL

NEW PRINCE SHRI BHAVANI COLLEGE OF
ENGINEERING & TECHNOLOGY
GOWRIVAKKAM, CHENNAI - 600 073



[Signature]
PRINCIPAL
NEW PRINCE SHRI BHAVANI COLLEGE OF
ENGINEERING & TECHNOLOGY
GOWRIVAKKAM, CHENNAI - 600 073



New Prince Shri Bhavani College of Engineering and Technology



Tambaram-Velachery Main Road, Santhosapuram, Chennai-600 073
www.facebook.com/newprincebhavani | www.twitter.com/newprincebhavani | www.instagram.com/newprincebhavani | www.youtube.com/newprincebhavani

Department of Information Technology

Alumni Feedback on Syllabus Batch:2016 -2020 Analysis Report

S.No	Statements	Percentage of Response			
		Excellent	Very good	Good	Poor
1.	Help of graduation to work in teams.	16%	37%	47%	0%
2.	How do you rate the learning experience in terms of their relevance to the real life applications	16%	26%	58%	0%
3.	Compatibility of syllabus with industry standards.	11%	42%	47%	0%
4.	How do you rate the curriculum/ courses content that you have learnt in relation to your current job.	16%	16%	63%	0%
5.	Learning values(in terms of skills, concepts, knowledge, analytical ability) in syllabus.	21%	42%	37%	0%
6.	Curriculum is sufficient to make you analyze the engineering problems and it's suitable solutions.	16%	37%	47%	0%
7.	Whether the engineering program facilitates employability.	21%	32%	42%	0%
8.	Whether the practical components under the program is covered sufficiently?	11%	42%	42%	0%
9.	Whether the program covers all the courses required for the higher studies and abroad studies?	21%	11%	68%	0%
10.	Whether the infrastructure for the program is adequate?	16%	21%	58%	0%
11.	Elective courses offered is useful in job.	26%	11%	47%	0%
12.	Extra/co-curricular activities through club activities or program you have participated as students were they helpful in overall careers.	21%	26%	47%	0%
13.	Research and development opportunities as a UG/PG students.	11%	16%	63%	0%
14.	Knowledge gained in practical classes in laboratories	16%	37%	42%	0%
15.	Continuously soft skills training for placements.	37%	32%	32%	0%

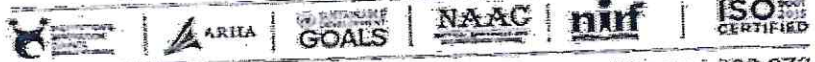



PRINCIPAL

NEW PRINCE SHRI BHAVANI COLLEGE OF
ENGINEERING & TECHNOLOGY
GOWRIVAKKAM, CHENNAI - 600 073



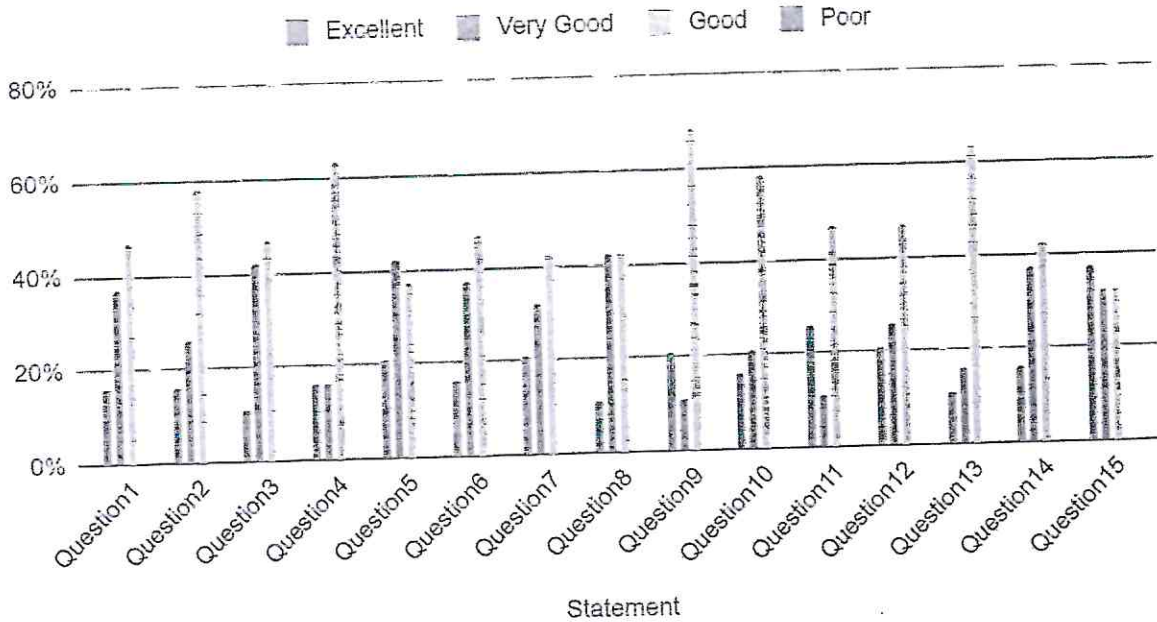
New Prince Shri Bhavani College of Engineering and Technology



Tambaram-Velachery Main Road, Santhosapuram, Chennai-600 073

Department of Information Technology

ALUMNI FEEDBACK(2016-2020)



Inference:

- Need more extracurricular and co curricular activities.
- Need more soft skills training

Action Suggested:

- To organize soft skills training from third year itself.
- To motivate students to participate in co curricular and extracurricular activities.



HOD

Head of the Department,
 Dept. of Information Technology,
 New Prince Shri Bhavani College of Engg. & Tech,
 Mangalvasal Main Road, Gowrivakkam, Chennai-73.

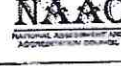
PRINCIPAL

NEW PRINCE SHRI BHAVANI COLLEGE OF
 ENGINEERING & TECHNOLOGY
 GOWRIVAKKAM, CHENNAI - 600 073



New Prince Shri Bhavani

College of Engineering and Technology



Tamparam-Velachery Main Road, Santhosapuram, Chennai-600 073

f www.facebook.com/npsbceofficial t twitter.com/newprinceengg @ www.instagram.com/newprinceengg_official

Department of Mechanical Engineering

Alumni Feedback on Syllabus

Batch: 2016-2020

Analysis Report

S.No	Statements	Percentage of Response			
		Excellent	Very good	Good	Poor
1.	Help of graduation to work in teams.	29	43	21	7
2.	How do you rate the learning experience in terms of their relevance to the real life applications	14	57	21	7
3.	Compatibility of syllabus with industry standards.	0	64	21	14
4.	How do you rate the curriculum/ courses content that you have learnt in relation to your current job.	14	43	29	14
5.	Learning values(in terms of skills, concepts, knowledge, analytical ability) in syllabus.	14	43	43	0
6.	Curriculum is sufficient to make you analyze the engineering problems and it's suitable solutions.	14	29	50	7
7.	Whether the engineering program facilitates employability.	7	50	43	0
8.	Whether the practical components under the program is covered sufficiently?	14	36	50	0
9.	Whether the program covers all the courses required for the higher studies and abroad studies?	7	57	36	0
10.	Whether the infrastructure for the program is adequate?	7	29	64	0
11.	Elective courses offered is useful in job.	7	43	36	14
12.	Extra/co-curricular activities through club activities or program you have participated as students were they helpful in overall careers.	0	36	64	0
13.	Research and development opportunities as a UG/PG students.	7	36	50	7
14.	Knowledge gained in practical classes in laboratories	0	64	36	0
15.	Continuously soft skills training for placements.	7	36	50	7



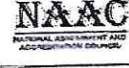
[Signature]

PRINCIPAL

NEW PRINCE SHRI BHAVANI COLLEGE OF
ENGINEERING & TECHNOLOGY
GOWRIVAKKAM, CHENNAI 600 073



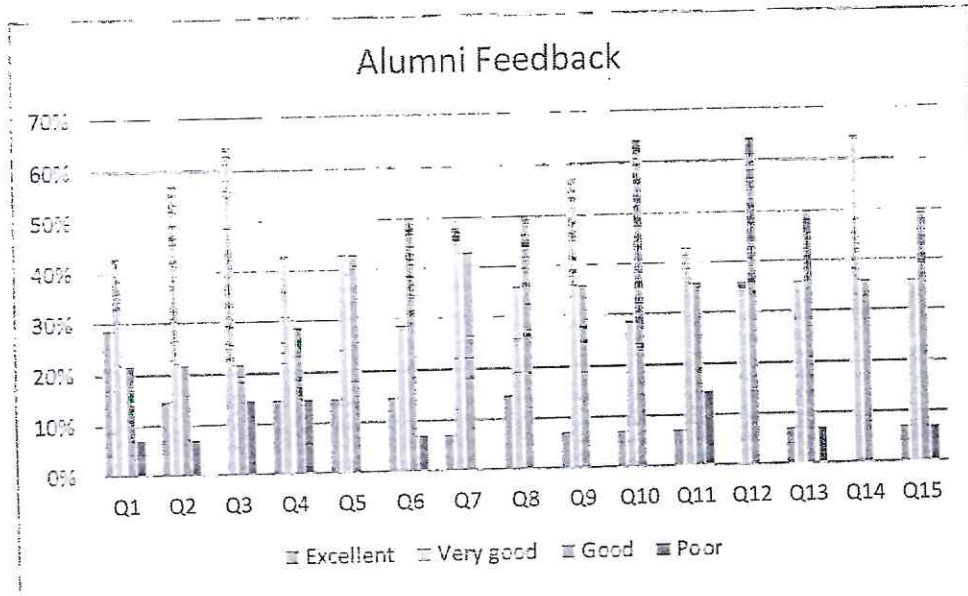
New Prince Shri Bhavani College of Engineering and Technology



Tambaram-Velachery Main Road, Santhosapuram, Chennai-600 073

f www.facebook.com/npsbceofficial | t twitter.com/newprinceengg | @ www.instagram.com/newprinceengg_official

Department of Mechanical Engineering



Inference:

The course curriculum did not meet industry requirements.

The knowledge gained in practical classes and laboratories is insufficient.

Action Suggested:

It is suggested that a seminar and guest lectures from industry professionals be held.

It is recommended that training programmes related to industrial work be conducted.

[Signature]
HOD

Head of the Department,
Dept. of Mechanical Engineering,
New Prince Shri Bhavani College of Engg. & Tech.,
Vengalivasal Main Road, Gowrivaakkam, Chennai - 600 073

[Signature]
PRINCIPAL

NEW PRINCE SHRI BHAVANI COLLEGE OF
ENGINEERING & TECHNOLOGY
GOWRIVAKKAM, CHENNAI - 600 073



[Signature]
PRINCIPAL

NEW PRINCE SHRI BHAVANI COLLEGE OF
ENGINEERING & TECHNOLOGY
GOWRIVAKKAM, CHENNAI - 600 073



New Prince Shri Bhavani College of Engineering and Technology



Tambaram-Velachery Main Road, Santhosapuram, Chennai-600 073

Department of Civil Engineering

Alumni Feedback on Syllabus Batch: 2016-2020 Analysis Report

S.No	Statements	Percentage of Response			
		Excellent	Very good	Good	Poor
1.	Help of graduation to work in teams.	28	44	28	0
2.	How do you rate the learning experience in terms of their relevance to the real life applications	57	14	29	0
3.	Compatibility of syllabus with industry standards.	28	44	28	0
4.	How do you rate the curriculum/ courses content that you have learnt in relation to your current job.	28	44	28	0
5.	Learning values(in terms of skills, concepts, knowledge, analytical ability) in syllabus.	43	28	29	0
6.	Curriculum is sufficient to make you analyze the engineering problems and it's suitable solutions.	28	43	29	0
7.	Whether the engineering program facilitates employability.	28	28	44	0
8.	Whether the practical components under the program is covered sufficiently?	28	14	58	0
9.	Whether the program covers all the courses required for the higher studies and abroad studies?	28	0	72	0
10.	Whether the infrastructure for the program is adequate?	28	28	44	0
11.	Elective courses offered is useful in job.	28	28	44	0
12.	Extra/co-curricular activities through club activities or program you have participated as students were they helpful in overall careers.	28	14	58	0
13.	Research and development opportunities as a UG/PG students.	28	28	44	0
14.	Knowledge gained in practical classes in laboratories	57	14	29	0
15.	Continuously soft skills training for placements.	28	14	58	0



PRINCIPAL

NEW PRINCE SHRI BHAVANI COLLEGE OF
ENGINEERING & TECHNOLOGY
GOWRIVAKKAM, CHENNAI 600 073



New Prince Shri Bhavani College of Engineering and Technology



Tambaram-Velachery Main Road, Santhosapuram, Chennai-600 073

Department of Civil Engineering

Inference:

Need for more extra-curricular activities.

Action Suggested:

More co-curricular activities should be done in a more effective ways.

Anly
HOD

Head of the Department
Dept. of Civil Engineering
New Prince Shri Bhavani College of Engineering & Technology,
Velachery Main Road, Gowrivaakkam, Chennai-600 073.



PRINCIPAL

[Signature]
PRINCIPAL

NEW PRINCE SHRI BHAVANI COLLEGE OF
ENGINEERING & TECHNOLOGY
GOWRIVAKKAM, CHENNAI - 600 073

[Signature]
PRINCIPAL
NEW PRINCE SHRI BHAVANI COLLEGE OF
ENGINEERING & TECHNOLOGY
GOWRIVAKKAM, CHENNAI - 600.073



New Prince Shri Bhavani

College of Engineering and Technology



Tambaram-Velachery Main Road, Santhosapuram, Chennai-600 073

f www.facebook.com/newprinceengg | t twitter.com/newprinceengg | @ www.instagram.com/newprinceengg

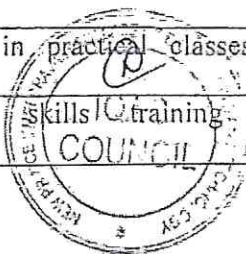
Department of Computer Applications

Alumini Feedback on syllabus

Batch: 2018-2020

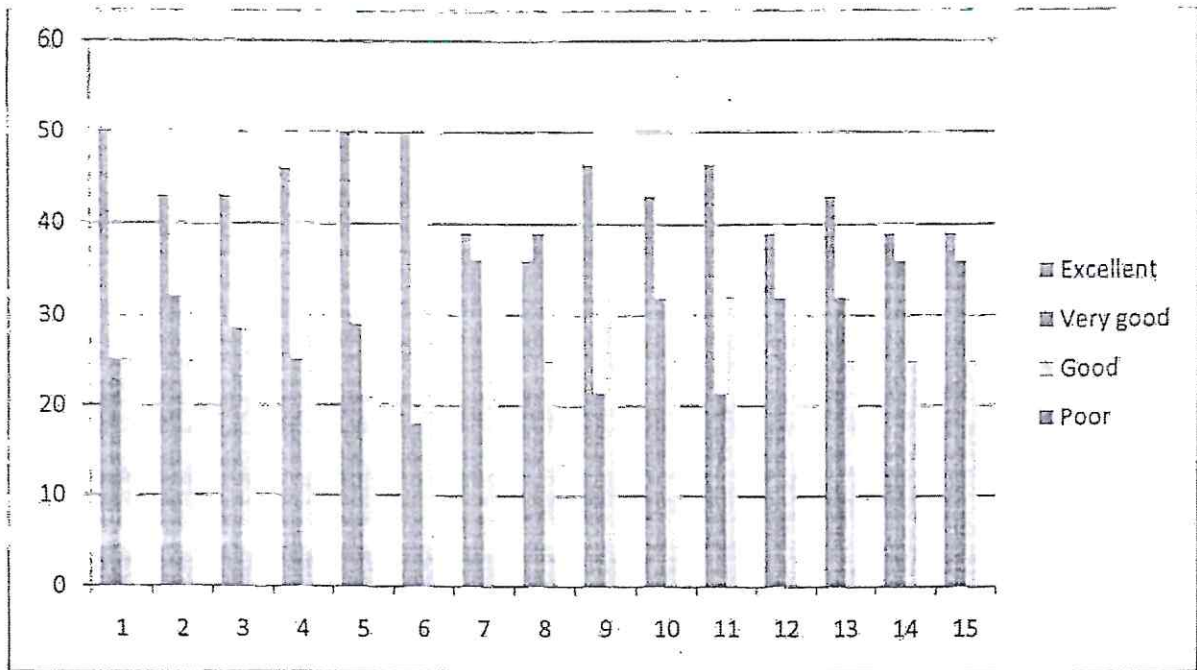
Analysis Report

S.No	Statements	Excellent	Very good	Good	Poor
1.	Help of graduation to work in teams.	50	25	25	0
2.	How do you rate the learning experience in terms of their relevance to the real life applications	43	32	25	0
3.	Compatibility of syllabus with industry standards.	43	28.5	28.5	0
4.	How do you rate the curriculum/ courses content that you have learnt in relation to your current job.	46	25	29	0
5.	Learning values(in terms of skills, concepts, knowledge, analytical ability) in syllabus.	50	29	21	0
6.	Curriculum is sufficient to make you analyze the engineering problems and it's suitable solutions.	50	18	32	0
7.	Whether the engineering program facilitates employability.	39	36	25	0
8.	Whether the practical components under the program is covered sufficiently?	36	39	25	0
9.	Whether the program covers all the courses required for the higher studies and abroad studies?	46.4287	21.4287	32.1428	0
10.	Whether the infrastructure for the program is adequate?	43	32	25	0
11.	Elective courses offered is useful in.job.	46.4287	21.4287	32.1428	0
12.	Extra/co-curricular activities through club activities or program you have participated as students were they helpful in overall careers.	39	32	29	0
13.	Research and development opportunities as a UG/PG students.	43	32	25	0
14.	Knowledge gained in practical classes in laboratories	39	36	25	0
15.	Continuously soft skills/training for placements.	39	36	25	0



[Signature]
PRINCIPAL

NEW PRINCE SHRI BHAVANI COLLEGE OF
ENGINEERING & TECHNOLOGY
COWRIVAKKAM, CHENNAI - 600 073



Inference:

Knowledge gained in laboratories is not sufficient for careers.

Action Suggested:

It is recommended that seminar/workshop and guest lecturers from industry professional be held.

for. S. J. [Signature]
HOD

[Signature]
PRINCIPAL

PRINCIPAL
NEW PRINCE SHRI BHAVANI COLLEGE OF
ENGINEERING & TECHNOLOGY
GOVINDAVAKKAM, CHENNAI - 600 077.

